

ROBERT D. CLARY P.E. P.C.
 815 GOLDEN HILL
 CHEYENNE, WYOMING 82009 FAX 307-634-6067

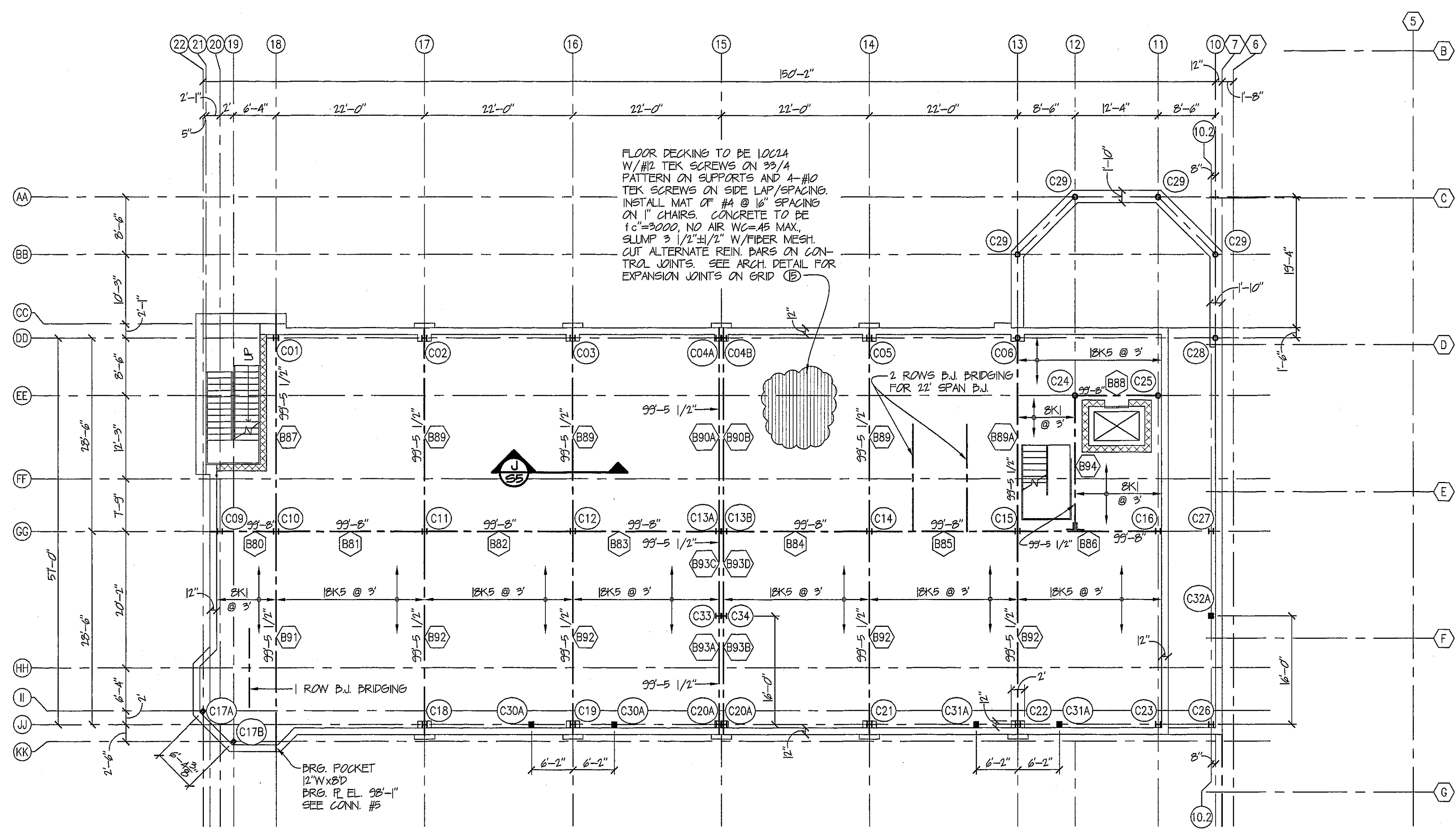
HISTORIC DINNEEN BUILDING
 CHEYENNE, WYOMING

FIRST FLOOR FRAMING PLAN
 400 W 16TH ST.

210042

4-26-11

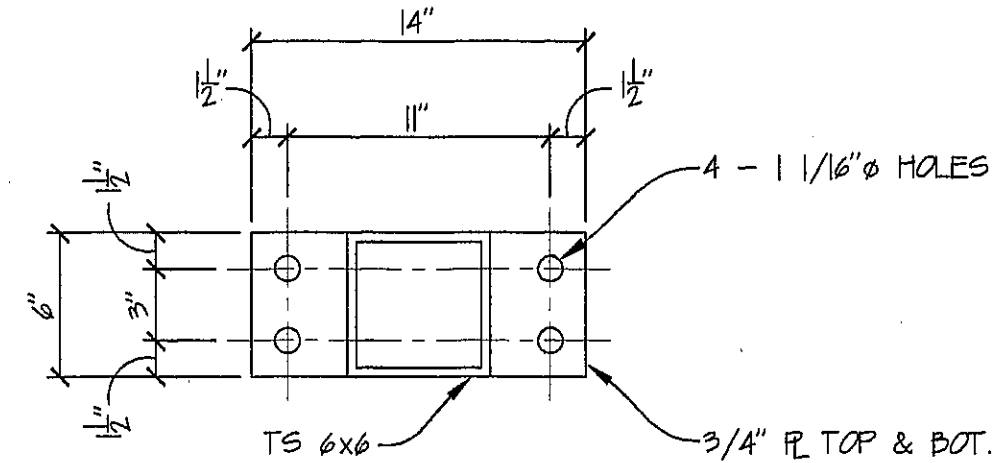
S4



FIRST FLOOR FRAMING PLAN
 3/32" = 1'-0"

COLUMN SCHEDULE									
COLUMN	SIZE	PRG. EL.	TOP EL.	COL. LENGTH	CONNECTING DMS.	BASE R.	CAP R.	FOUNDATION BOLT NO.	FOUNDATION BOLT SIZE
C01	W8x9	97'-9"	127'-0 1/2"	29'-3 1/2"	D1, D2, D42, D41, D47	BFC	NONE	4	3/4"
C02	W8x9	97'-9"	126'-6 1/2"	28'-9 1/2"	D1, D2, D41, D70, D42, D43	BFD	NONE	4	3/4"
C03	W8x9	97'-9"	126'-6 1/2"	28'-9 1/2"	D2, D3, D42, D70, D43	BFD	NONE	4	3/4"
C04A	W8x9	97'-9"	127'-0 1/2"	29'-3 1/2"	D3, D43, D71, D30A	BPK	NONE	6	1"
C04B	W8x9	97'-9"	127'-0 1/2"	29'-3 1/2"	D4, D71, D44, D30B	COMBINED	NONE	COMBINED	-
C05	FBx5	97'-9"	126'-6 1/2"	28'-9 1/2"	D4, D5, D44, D70, D45, D46	BFD	NONE	4	3/4"
C06	FB STD	97'-9"	126'-6"	28'-11"	D5, D6, D30, D28, D45, D70, D46, D48, D49	BFA	NONE	4	1"
C07	DELETED						NONE		
C08	DELETED						NONE		
C09	W8x9	97'-9"	127'-4 5/16"	29'-7 5/16"	D18, D9, D10, D50, D49, D50, D50	BFC	NONE	4	3/4"
C10	W10x40	89'-1 1/2"	127'-4 1/4"	38'-2 3/4"	D10, D11, D50, D51, D75, D48, D56, D51, D30, D57	BFE	NONE	4	1"
C11	W10x7	89'-1 1/2"	127'-4 1/4"	38'-2 3/4"	D11, D12, D51, D52, D70, D70, D51, D52, D52, D53	BFD	NONE	4	1"
C12	W10x7	89'-1 1/2"	127'-4 1/4"	38'-2 3/4"	D12, D13, D52, D53, D70, D70, D52, D53, D53, D53	BFD	NONE	4	1"
C13A	W8x9	89'-1 1/2"	127'-4 1/4"	38'-2 3/4"	D53, D71, D71, D53, D30A	BPK	NONE	6	1"
C13B	W8x9	89'-1 1/2"	127'-4 1/4"	38'-2 3/4"	D14, D54, D71, D71, D30B, D30B, D54	COMBINED	NONE	COMBINED	-
C14	W10x7	89'-1 1/2"	127'-4 1/4"	38'-2 3/4"	D14, D15, D54, D55, D70, D70, D54, D55, D52, D53	BFD	NONE	4	1"
C15	W10x7	89'-1 1/2"	127'-4 1/4"	38'-2 3/4"	D15, D16, D55, D56, D70, D55, D56, D52, D53	BFD	NONE	4	1"
C16	W10x4	97'-9"	127'-8 7/8"	29'-11 7/8"	D16, D17, D56, D57, D72, D73, D56	BFA	NONE	4	1"
C17A	TS 6x6x3/8	97'-9"	127'-10 1/2"	30'-1 1/2"	D31, D76	TSI	NONE	4	3/4"
C17B	TS 6x6x3/8	97'-9"	127'-10 1/2"	30'-1 1/2"	D31, D76	TSI	NONE	4	3/4"
C18	W8x9	97'-9"	127'-10 1/2"	30'-1 1/2"	D19, D20, D59, D60, D70	BFA	NONE	4	1"
C19	W8x9	97'-9"	127'-10 1/2"	30'-1 1/2"	D20, D21, D60, D61, D70	BFD	NONE	4	3/4"
C20A	W8x9	97'-9"	127'-10 1/2"	30'-1 1/2"	D21, D41, D70, D30A	BPK	NONE	6	1"

COLUMN	SIZE	PRG. EL.	TOP EL.	COL. LENGTH	CONNECTING DMS.	BASE R.	CAP R.	FOUNDATION BOLT NO.	FOUNDATION BOLT SIZE
C20B	W8x9	97'-9"	127'-10 1/2"	30'-1 1/2"	D22, D22, D70, D30A	COMBINED	NONE	-	-
C21	W8x9	97'-9"	127'-10 1/2"	30'-1 1/2"	D22, D23, D62, D63, D70, D22	BFD	NONE	4	3/4"
C22	W8x9	97'-9"	127'-10 1/2"	30'-1 1/2"	D23, D24, D63, D64, D70, D22	BFD	NONE	4	3/4"
C23	W8x9	97'-9"	127'-10 1/2"	30'-1 1/2"	D24, D25, D64, D65, D72	BPM	NONE	4	3/4"
C24	FBx5	89'-5 1/2"	105'-4"	99'-10 1/2"	D6, D7, D30, D47, D68	BFB	B 5/8"x1/4"	4	3/4"
C25	FBx5	89'-5 1/2"	105'-4"	99'-10 1/2"	D7, D30, D47, D74, D68	BFB	B 5/8"x1/4"	4	3/4"
C26	W8x40	99'-5 1/2"	127'-10 1/2"	28'-5"	D25, D26, D65, D66	BPM	NONE	4	3/4"
C27	W8x9	99'-5 1/2"	127'-10 1/2"	28'-5"	D26, D27, D71, D57, D66	BFD 30"	NONE	4	3/4"
C28	FBx5	99'-5 1/2"	105'-4"	99'-10 1/2"	D29, D28, D30, D46, D68	BFB	B 5/8"x1/4"	4	3/4"
C29	FB STD	99'-5 1/2"	105'-4"	99'-10 1/2"	D28, D28, D30, D46, D68	BFB	B 5/8"x1/4"	4	3/4"
C30A	TS 6x6x5/16	97'-9"	111'-7 3/4"	13'-10 3/4"	D30, CAP K FRAME	BPH	TSI	4	3/4"
C30B	TS 6x6x1/4	112'-9 1/2"	126'-6 1/4"	13'-8 3/4"	D30 K FRAME	TSI	TSI	4	3/4"
C31A	TS 6x6x5/16	97'-9"	111'-7 3/4"	13'-10 3/4"	D30, CAP K FRAME	TSI	TSI	4	3/4"
C31B	TS 6x6x1/4	112'-9 1/2"	126'-6 1/4"	13'-8 3/4"	D30 K FRAME	TSI	TSI	4	3/4"
C31A	TS 6x6x3/8	99'-5 1/2"	111'-3 3/4"	12'-3 3/4"	D36, C30B X BRACE	TSI	TSI	4	3/4"
C31B	TS 6x6x5/16	112'-9 1/2"	126'-5 3/4"	13'-8 1/4" (1/2" SHIM)	D36 X BRACE	TSI	TSI	4	3/4"
C33	W8x9	89'-1 1/2"	127'-2 7/8"	38'-1 3/16"	D32A, D32B, D70, D70, D32A, D32C, X BRACE	BPK	NONE	4	1"
C34	W8x9	89'-1 1/2"	127'-2 7/8"	38'-1 3/16"	D32A, D32B, D70, D70, D32B, D32D, X BRACE	COMBINED	NONE	4	1"



BEAM SCHEDULE														
BEAM	SIZE	APPROX. GRID LENGTH	CONN. NO.	3/4\"/>										
D1	W14x22	22'-0"	111	3	1/4	3/16	-0-							
D2, D3, D4, D5, D6, D1	W14x22	22'-0"	111	3	1/4	3/16	-0-							
D11	W16x40	22'-0"	12, 12	4	5/16	1/4	-0-							
D12, D13, D14, D15	W16x36	22'-0"	12, 12	4	5/16	1/4	-0-							
D16	W16x31	20'-10"	12, 12	4	5/16	1/4	-0-							
D17	W14x22	8'-6"	12, F/56	3	1/4	3/16	-0-							
D25	W8x21	8'-6"	12, 12	3	1/4	3/16	-0-							
D65, D27	W14x22	12'-4"	3 SIM, 3 SIM	3	1/4	3/16	-0-							
D24	W14x22	20'-10"	111	3	1/4	3/16	-0-							
D19	W16x40	30'-4"	7 SIM, 11	4	5/16	1/4	-0-							
D18, D28, D16, D27	W14x22	28'-6"	11, 12 SIM, 3	2	1/4	3/16	-0-							
D9	W14x22	7'-9"	10, PACK	2	1/4	3/16	-0-							
D28	W10x15	12'-4"	13	2	1/4	3/16	-0-							
D41, D42, D43, D44, D45, D46, D47, D48, D49	W14x22	22'-0"	8, 8	2	1/4	3/16	-0-							
D56	W14x22	20'-10"	8, 8	2	1/4	3/16	-0-							
D57, D50	W14x22	8'-0"±	11	2	1/4	3/16	-0-							
D74	W14x22	8'-6"	2 SIM, 4	3	1/4	3/16	3/4"	3	2.00	4.25	6.25			
D47	W14x22	12'-4"	4, 4	2	1/4	3/16	-0-							
D65	W14x22	7'-10"	11	2	1/4	3/16	-0-							
D59	W14x26	30'-4"	7, 61	4 - 1"	5/16	1/4	-0-							
D48	W16x57	28'-6"	9, 8	4 - 1"	5/16	1/4	3/4"	8	2	4.625	9.247	13.870	19.07	
D70	W16x55	28'-6"	9, 8	4 - 1"	5/16	5/16	3/4"	10	2	4.75	9.5	14.25	19.07	23.75
D71, D71B	W16x45	28'-6"	9, 8	4 - 1"	5/16	1/4	3/4"	10	2	4.75	9.5	14.25	19.07	23.75
D72	W16x57	20'-0"	8, 9	4 - 1"	5/16	1/4	3/4"	10	2	4.75	9.5	14.25	19.07	23.75
D73	W16x36	20'-0"	3, 3 SIM, 2 SIM	4	5/16	1/4	3/4"	12	2	2.344	5.689	8.533	12.356	16.178
D74	W14x22	8'-6"	3 SIM, 2 SIM	3	1/4	3/16	3/4"	6	1	1.417	2.833	4.250	5.667	7.083
D75	W16x57	28'-6"	9, 9	4 - 1"	5/16	1/4	3/4"	10	2	4.75	9.5	14.25	19.07	23.75
D80	W14x22	8'-4"	1 SIM	2	1/4	3/16	-0-							
D81, D82, D83, D84, D85	W14x22	22'-0"	11	2	1/4	3/16	-0-							
D86	W14x22	20'-10"	11, 2	2	1/4	3/16	-0-							
D87	W16x57	28'-6"	1, D/51	4 - 1"	5/16	1/4	3/4"	10	2	4.625	9.247	13.870	18.747	23.623
D88	W14x22	12'-4"	4, 4	2	1/4	3/16	-0-							
D89, D92	W16x77	28'-6"	1, D/51	4 - 1"	5/16	5/16	3/4"	10	2	4.75	9.5	14.25	19.07	23.75
D93A, D93B	W16x45	28'-6"	1 SIM, 4 - 1"	5/16	1/4	3/4"	10	2	4.75	9.5	14.25	19.07	23.75	
D91	W16x57	32'-0"	15	4 - 1"	5/16	1/4	3/4"	10	2	4.75	9.5	14.25	19.07	23.75
D93A, D93B	W16x26	16'-0"	1 SIM, 4	1/4	3/16	3/4"	6	2	2.67	5.333	8.0	10.67	13.33	
D94	W14x22	20'-0"	2, 4 SIM, 3	3	1/4	3/16	3/4"	6	3	1.111	2.222	3.333	4.444	5.556
D46	W16x45	29'-4"	3, 2 SIM, 3	4	1/4	3/16	-0-							
D88	W14x26	12'-4"	3, 3	3	1/4	3/16	Add Plate 3/8" x 21" 12'-4" to bottom flange							
D10	W14x22	8'-4"	12, 12	3	1/4	3/16	-0-							
D76	W16x31	6'-4 3/8"	10, 10	4	1/4	3/16	-0-							
D31	W14x22	6'-4 3/8"	10 SIM	3	1/4	3/16	-0-							
D58	W12x26	28'-6"	6 SIM, 9	3	1/4	3/16	3/4"	6	2	4.75	9.5	14.25	19.07	23.75
D66, D67	W12x26	28'-6"	6 SIM, 6 SIM	3	1/4	3/16	3/4"	8	2	4.75	9.5	14.25	19.07	23.75
D49	W12x26	7'-9"	3, PACK	2	1/4	3/16	3/4"	4	1.251	2.503	3.755	5.007	6.259	
D93A, D93B	W16x26	12'-6"	11	3	1/4	3/16	3/4"	4	2.283	4.567	6.850	9.133	11.417	
D93A	W16x77	28'-2"	13	4 - 1"	5/16	5/16	3/4"	10	2	4.75	9.5	14.25	19.07	23.75
D70, D71D	W16x26	16'-0"	3, 3	4	1/4	3/16	3/4"	6	2.67	5.333	8.0	10.67	13.33	
D7E, D7F	W16x26	12'-6"	9, 9	3	1/4	3/16	3/4"	4	2.283	4.567	6.850	9.133	11.417	
D37	DPL CHX207	26'-7"	19, 0	3	1/4	3/16	-0-							