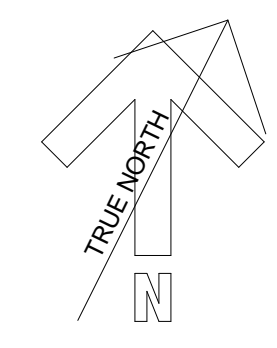


Revision Schedule		
Revision Number	Revision Description	Revision Date
1	Foundation Change	2011.05.06

1 HISTORIC TOP
3/16" = 1'-0" S100

1. KEYNOTES

- ELECTRICAL CONDUIT SLEEVES - Provide Eight (8) 4 inch diameter PVC sleeves through the existing building foundation, through the foundation of the original building west of the Dinneen Building, and through the Basement wall of the addition, at the location shown in the existing elevator pit. There shall be a minimum of 8 inches of foundation wall (measured horizontally) remaining between sleeves. Sleeves may be stacked with 3 inches of clearance between them (measured vertically). Provide 4 inch diameter PVC sleeves in matching locations through the east Basement wall of the addition.
- TELE/DATA & FIRE ALARM CONDUIT SLEEVES - Provide Six (6) 4 inch diameter PVC sleeves through the existing building foundation (through the foundation of the original building west of the Dinneen Building, and through the Basement wall of the addition) at the location shown in the existing elevator pit. There shall be a minimum of 8 inches of foundation wall (measured horizontally) remaining between sleeves. Sleeves may be stacked with 3 inches of clearance between them (measured vertically). Provide 4 inch diameter PVC sleeves in matching locations through the east Basement wall of the addition.
- SANITARY SEWER SLEEVE - Provide One (1) 8 inch diameter PVC sleeve through the Basement wall of the addition, at the location shown. Top of sleeve shall be 6 feet above Finished Basement Floor (4 feet below Finished First Floor).
- STORM SEWER SLEEVE - Provide One (1) 8 inch diameter PVC sleeve through the Basement wall of the addition, at the location shown. Top of sleeve shall be 6 feet above Finished Basement Floor (4 feet below Finished First Floor).
- MISCELLANEOUS SLEEVE - Provide 4 inch diameter PVC sleeves through the Basement wall at the locations shown for landscape irrigation, miscellaneous electrical, snow melt, etc. Top of sleeve shall be 8 feet above Finished Basement Floor (2 feet below Finished First Floor).
- MISCELLANEOUS SLEEVES - Provide Two (2) 4 inch diameter PVC sleeves through the existing building foundation (through the foundation of the original building west of the Dinneen Building, and through the Basement wall of the addition) at the location shown for landscape irrigation, miscellaneous electrical, snow melt, etc. Top of sleeve shall be 8 feet above Finished Basement Floor (2 feet below Finished First Floor). Provide 4 inch diameter PVC sleeves in matching locations through the east Basement wall of the addition.



NOTE:
THE ORIGINAL DRAWINGS FOR THIS PROJECT ARE 36" X 24". IF YOU HAVE A SMALLER SET, IT HAS BEEN REDUCED AND DRAWING SCALES ARE NOT VALID.

The Design Studio, inc.
Architecture + Interior Design
1906 Thomas Avenue, Cheyenne, Wyoming 82001
T) 307.775.9970

TDSi

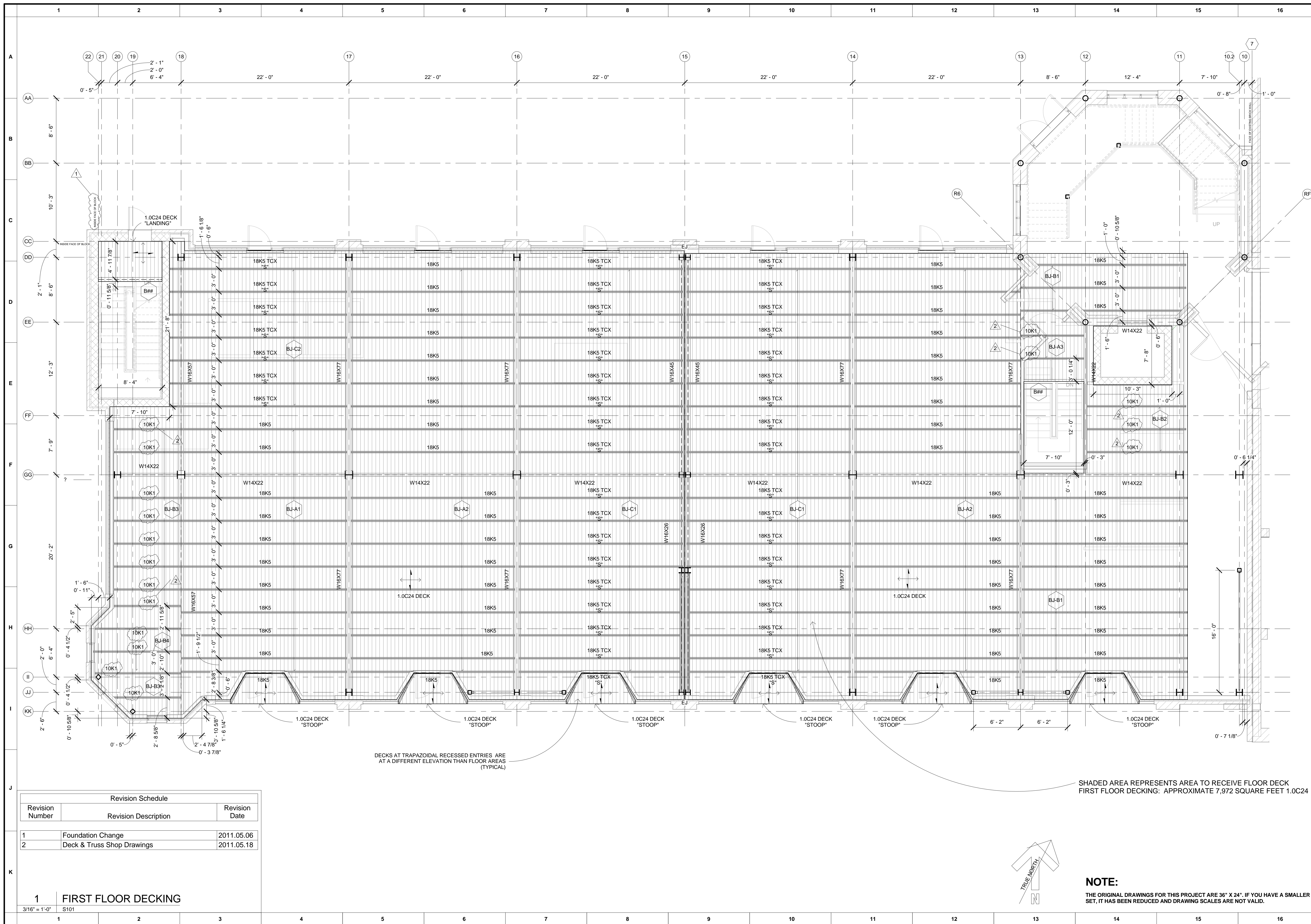
PRELIMINARY DRAWINGS
NOT FOR CONSTRUCTION

Renovation, Restoration, and Addition to the
DINNEEN BUILDING
Cheyenne, Wyoming

APN: 10.2.161 Date Issued: 2011.06.06
Drawn By: CET Checked By: RLB

Sheet Title:
FOUNDATION PLAN

Sheet Number:
S100

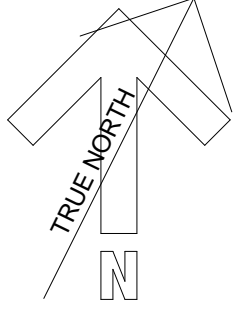


DECKS AT TRAPEZOIDAL RECESSED ENTRIES ARE AT A DIFFERENT ELEVATION THAN FLOOR AREAS (TYPICAL)

SHADED AREA REPRESENTS AREA TO RECEIVE FLOOR DECK
FIRST FLOOR DECKING: APPROXIMATE 7,972 SQUARE FEET 1.0C24

Revision Schedule		
Revision Number	Revision Description	Revision Date
1	Foundation Change	2011.05.06
2	Deck & Truss Shop Drawings	2011.05.18

1 FIRST FLOOR DECKING
3/16" = 1'-0"
S101



NOTE:
THE ORIGINAL DRAWINGS FOR THIS PROJECT ARE 36" X 24". IF YOU HAVE A SMALLER SET, IT HAS BEEN REDUCED AND DRAWING SCALES ARE NOT VALID.

The Design Studio, inc.
Architecture + Interior Design
1906 Thomas Avenue, Cheyenne, Wyoming 82001
T) 307.775.9970

TDSi

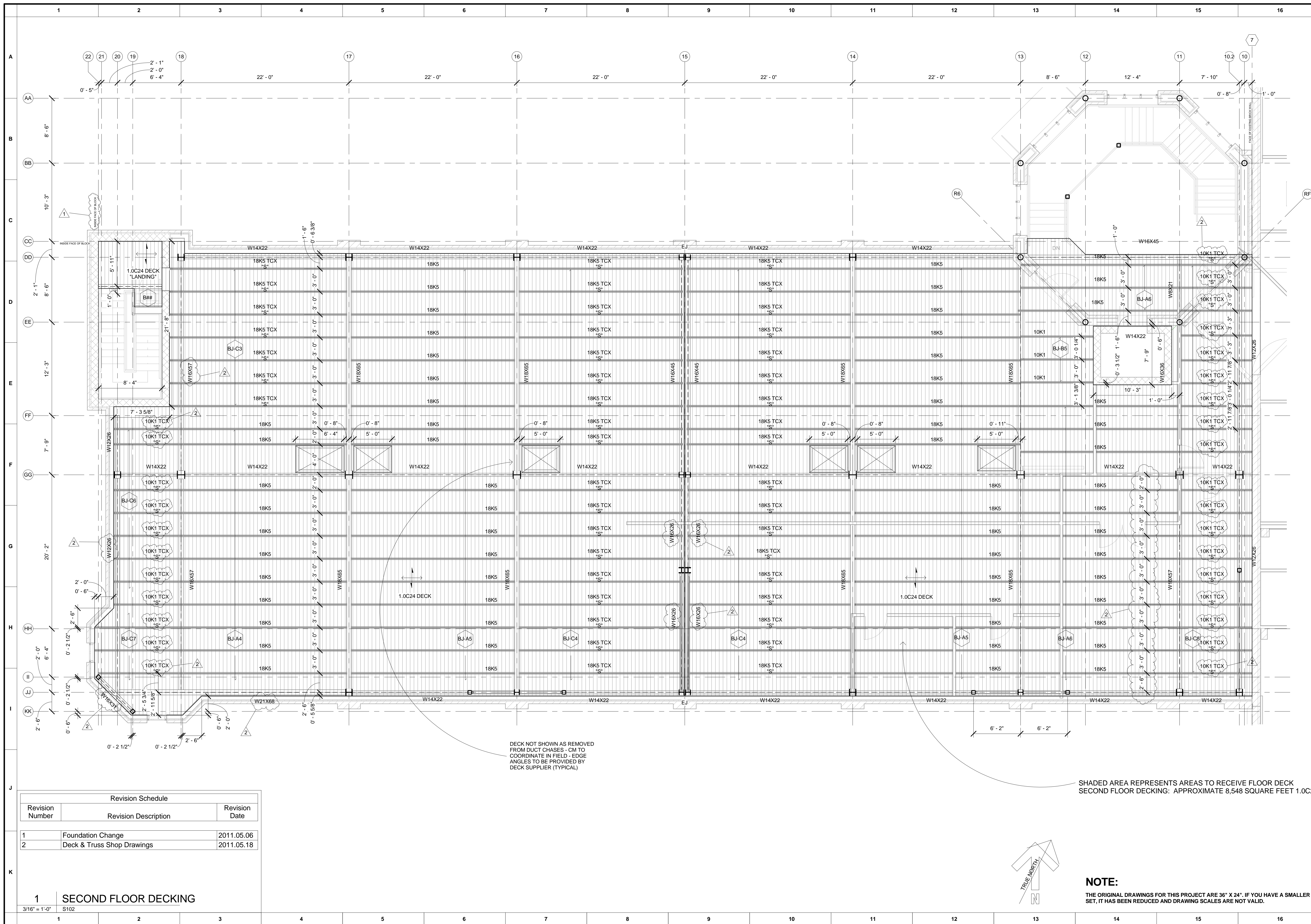
PRELIMINARY DRAWINGS
NOT FOR CONSTRUCTION

Renovation, Restoration, and Addition to the
DINNEEN BUILDING
Cheyenne, Wyoming

APN: 10.2.161 Date Issued: 2011.06.06
Drawn By: CET Checked By: RLB
Sheet Title:

1ST FLOOR
JOISTS & DECK

Sheet Number:
S101

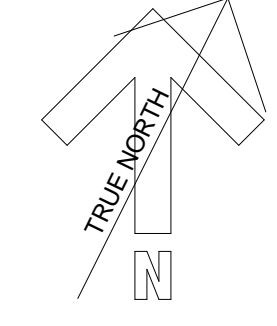


DECK NOT SHOWN AS REMOVED FROM DUCT CHASES - CM TO COORDINATE IN FIELD - EDGE ANGLES TO BE PROVIDED BY DECK SUPPLIER (TYPICAL)

SHADED AREA REPRESENTS AREAS TO RECEIVE FLOOR DECK
SECOND FLOOR DECKING: APPROXIMATE 8,548 SQUARE FEET 1.0C24

Revision Schedule		
Revision Number	Revision Description	Revision Date
1	Foundation Change	2011.05.06
2	Deck & Truss Shop Drawings	2011.05.18

1 SECOND FLOOR DECKING
3/16" = 1'-0"
S102



NOTE:
THE ORIGINAL DRAWINGS FOR THIS PROJECT ARE 36" X 24". IF YOU HAVE A SMALLER SET, IT HAS BEEN REDUCED AND DRAWING SCALES ARE NOT VALID.

The Design Studio, inc.
Architecture + Interior Design
1906 Thomas Avenue, Cheyenne, Wyoming 82001
T) 307.775.9970
F) 307.775.9946

TDSi

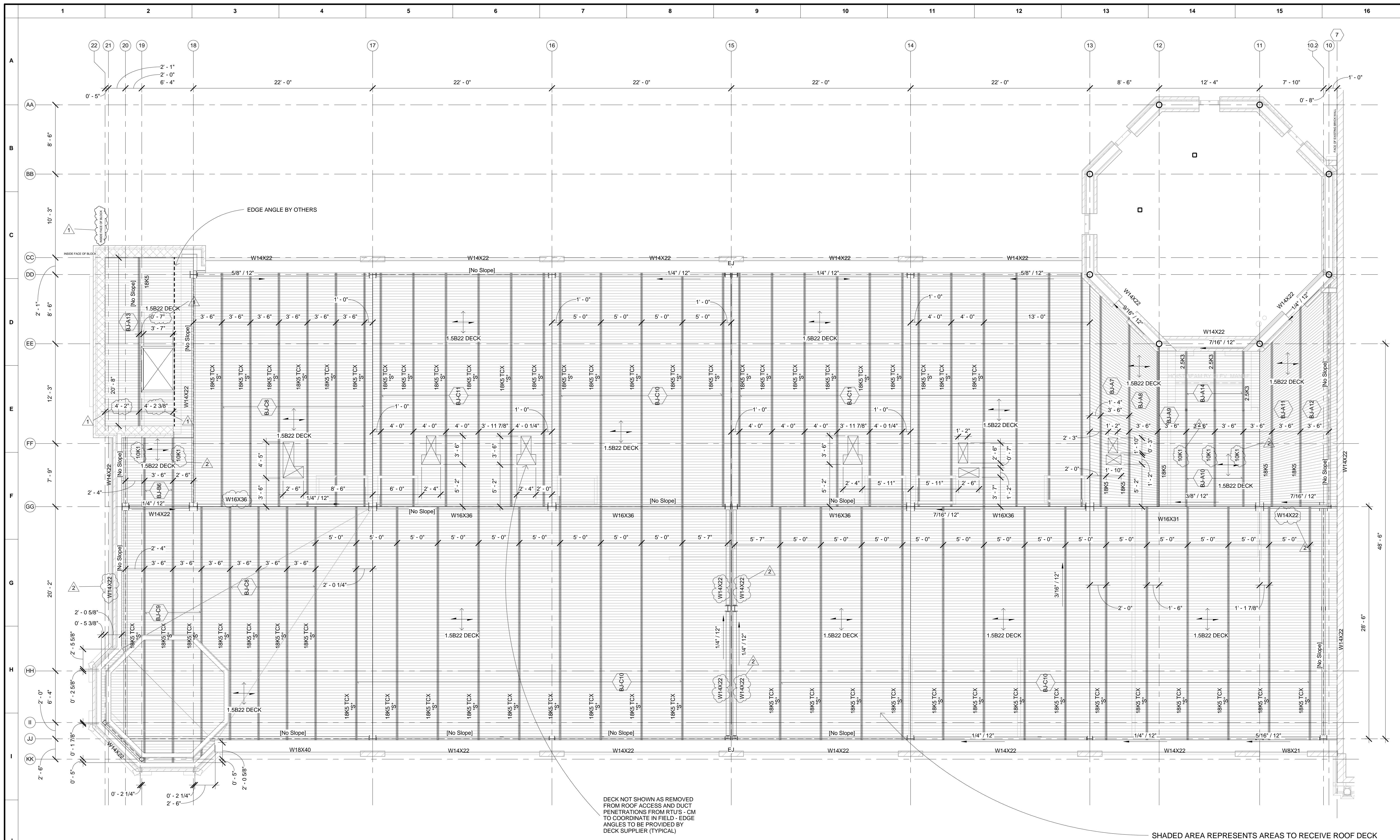
PRELIMINARY DRAWINGS
NOT FOR CONSTRUCTION

Renovation, Restoration, and Addition to the
DINNEEN BUILDING
Cheyenne, Wyoming

APN: 10.2.161 Date Issued: 2011.06.06
Drawn By: CET Checked By: RLB
Sheet Title:

2ND FLOOR
JOISTS & DECK

Sheet Number:
S102

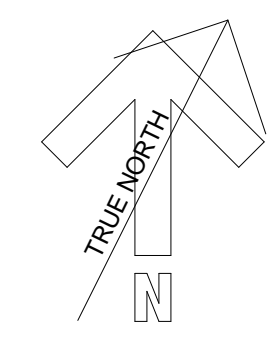


DECK NOT SHOWN AS REMOVED FROM ROOF ACCESS AND DUCT PENETRATIONS FROM RTUS - CM TO COORDINATE IN FIELD - EDGE ANGLES TO BE PROVIDED BY DECK SUPPLIER (TYPICAL)

SHADED AREA REPRESENTS AREAS TO RECEIVE ROOF DECK
 ROOF DECKING: APPROXIMATE 8,548 SQUARE FEET 1.5B22

Revision Schedule		
Revision Number	Revision Description	Revision Date
1	Foundation Change	2011.05.06
2	Deck & Truss Shop Drawings	2011.05.18

1 ROOF DECK
 3/16" = 1'-0"
 S103



NOTE:
 THE ORIGINAL DRAWINGS FOR THIS PROJECT ARE 36" X 24". IF YOU HAVE A SMALLER SET, IT HAS BEEN REDUCED AND DRAWING SCALES ARE NOT VALID.

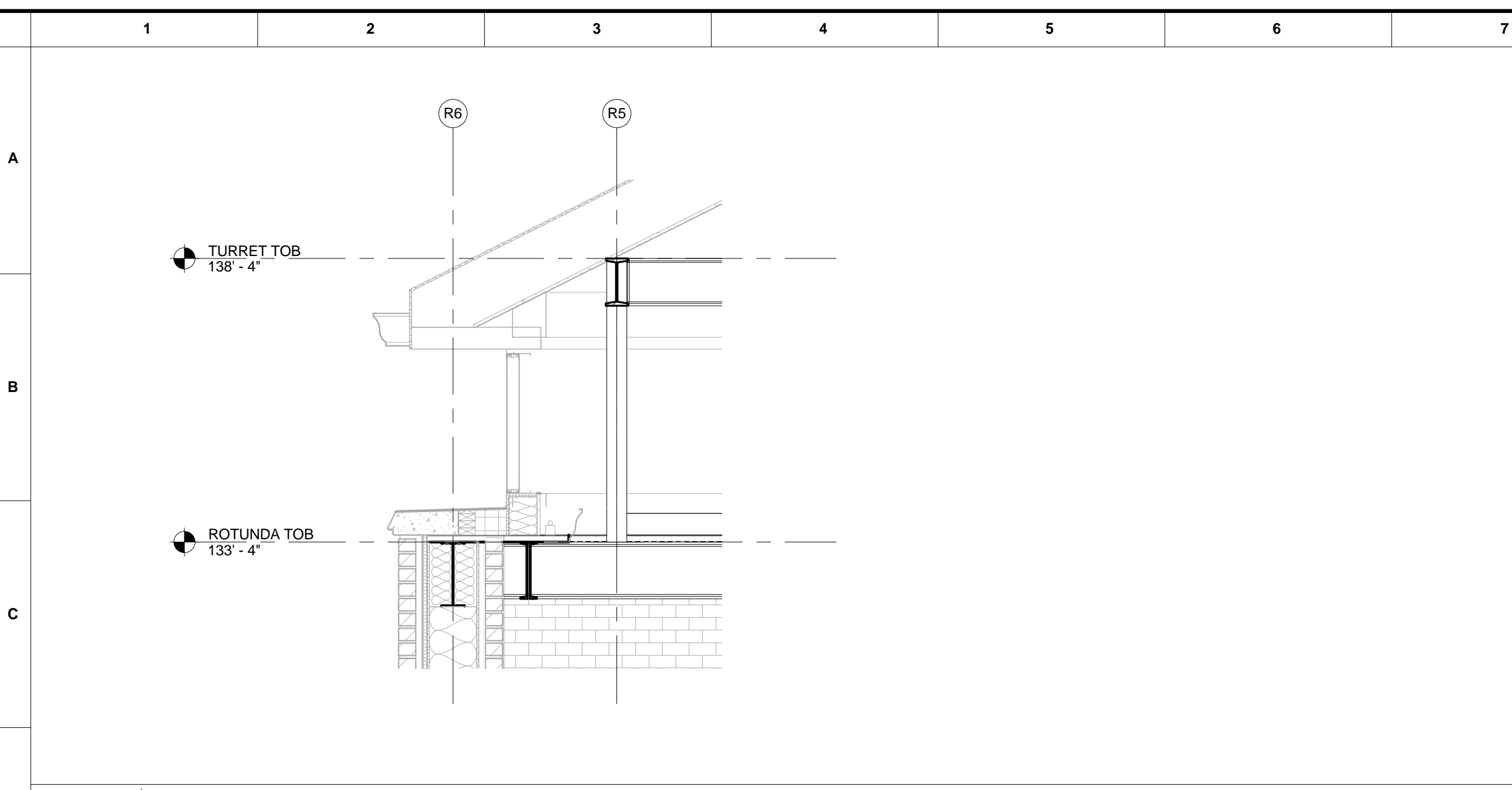
TDSi
 The Design Studio, inc.
 Architecture + Interior Design
 1906 Thomas Avenue, Cheyenne, Wyoming 82001
 T) 307.775.9970 F) 307.775.9946

PRELIMINARY DRAWINGS
 NOT FOR CONSTRUCTION

Renovation, Restoration, and Addition to the
DINNEEN BUILDING
 Cheyenne, Wyoming

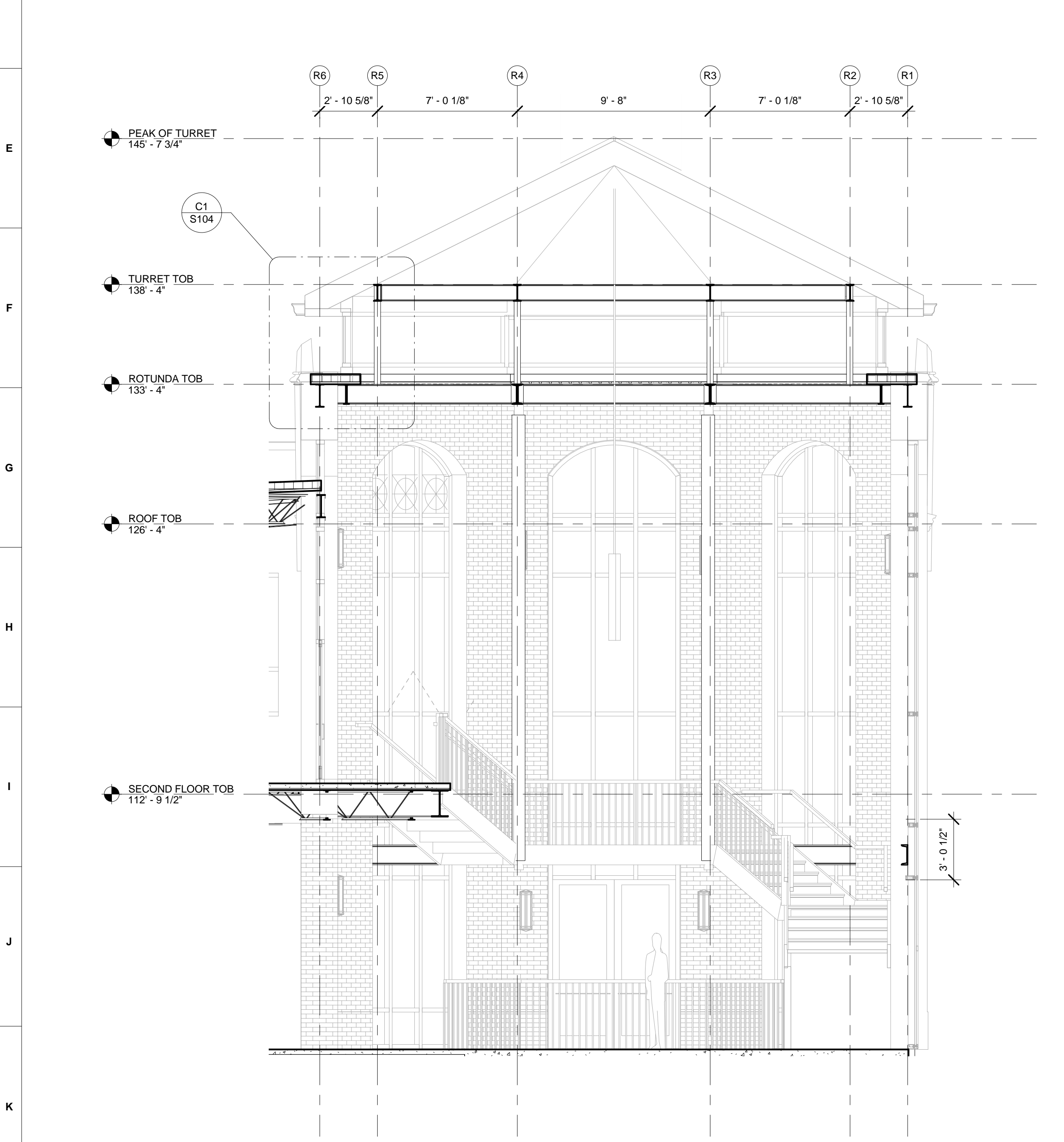
APN: 10.2.161 Date Issued: 2011.06.06
 Drawn By: CET Checked By: RLB
 Sheet Title: ROOF JOISTS & DECK

Sheet Number:
S103



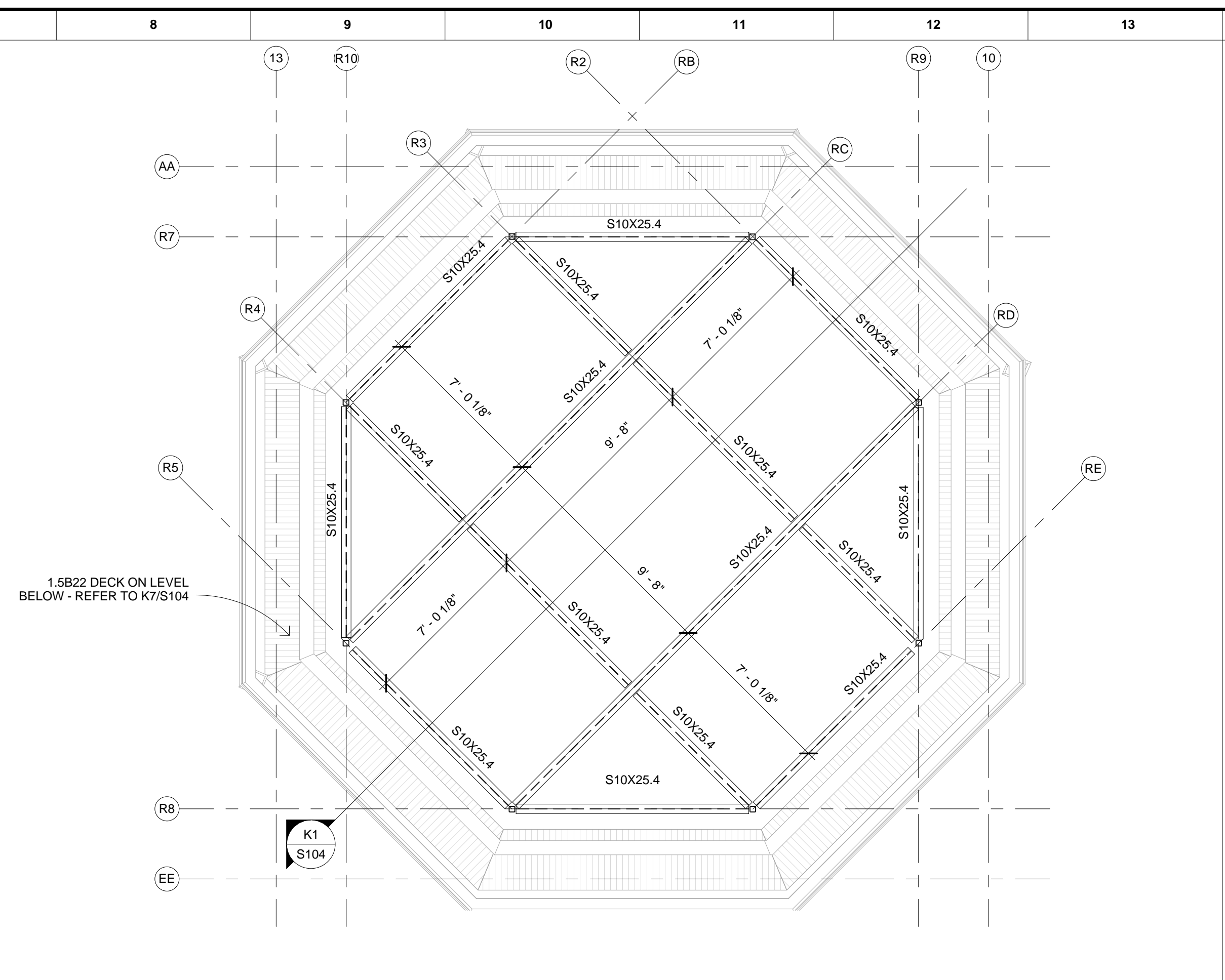
C1 Callout of SW-NE ROTUNDA SECTION

1/2" = 1'-0" S104



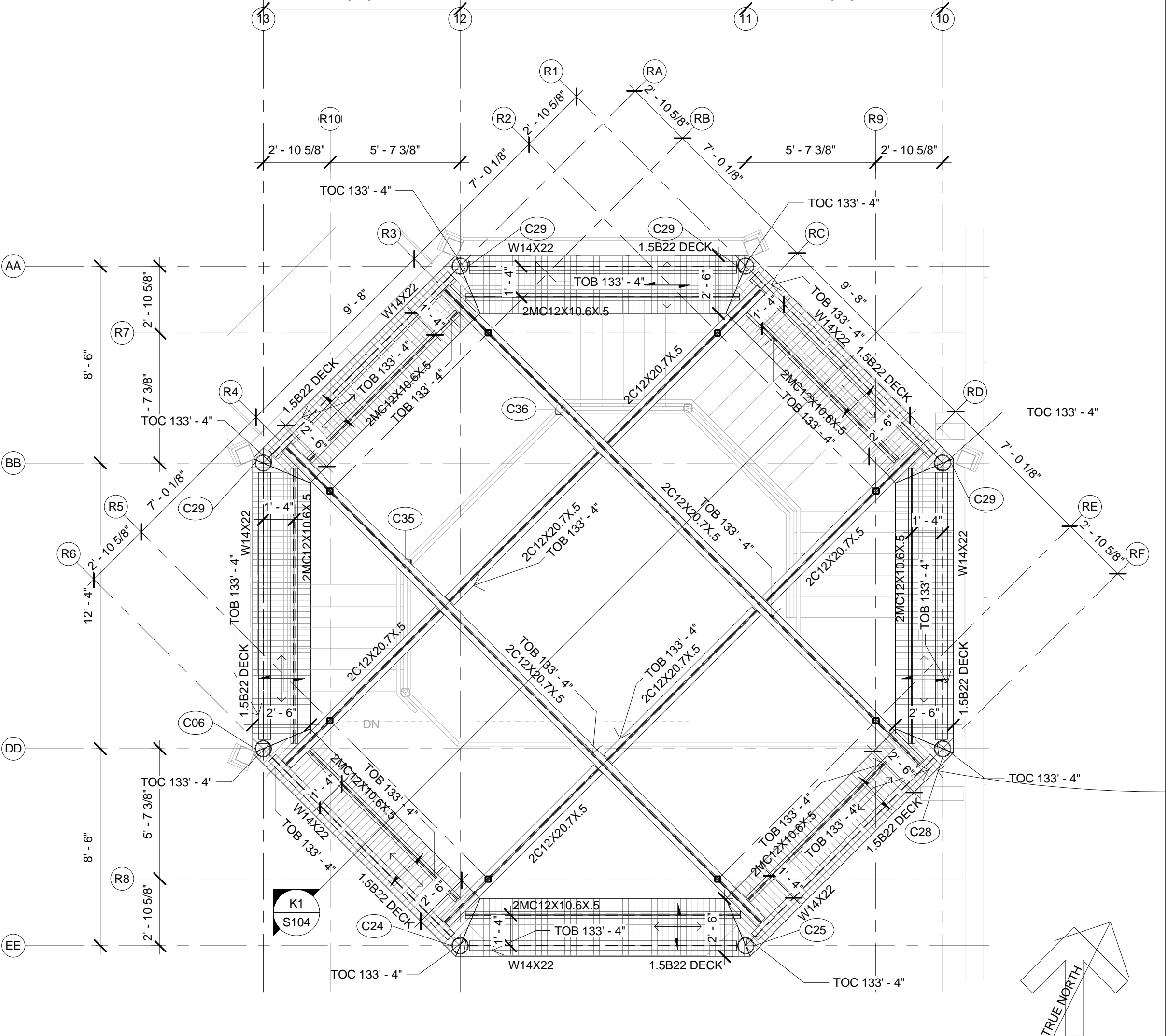
K1 SW-NE ROTUNDA SECTION

1/4" = 1'-0" S104



E7 TURRET TOP

1/4" = 1'-0" S104



K7 ROTUNDA TOP

1/4" = 1'-0" S104

SHADED AREA REPRESENTS AREAS TO RECEIVE ROOF DECK ROTUNDA DECKING: APPROXIMATE 384 SQUARE FEET 1.5B22

NOTE:
THE ORIGINAL DRAWINGS FOR THIS PROJECT ARE 36" X 24". IF YOU HAVE A SMALLER SET, IT HAS BEEN REDUCED AND DRAWING SCALES ARE NOT VALID.

TDSi
The Design Studio, inc.
Architecture + Interior Design
1906 Thomas Avenue, Cheyenne, Wyoming 82001
T) 307.775.9970 F) 307.775.9946

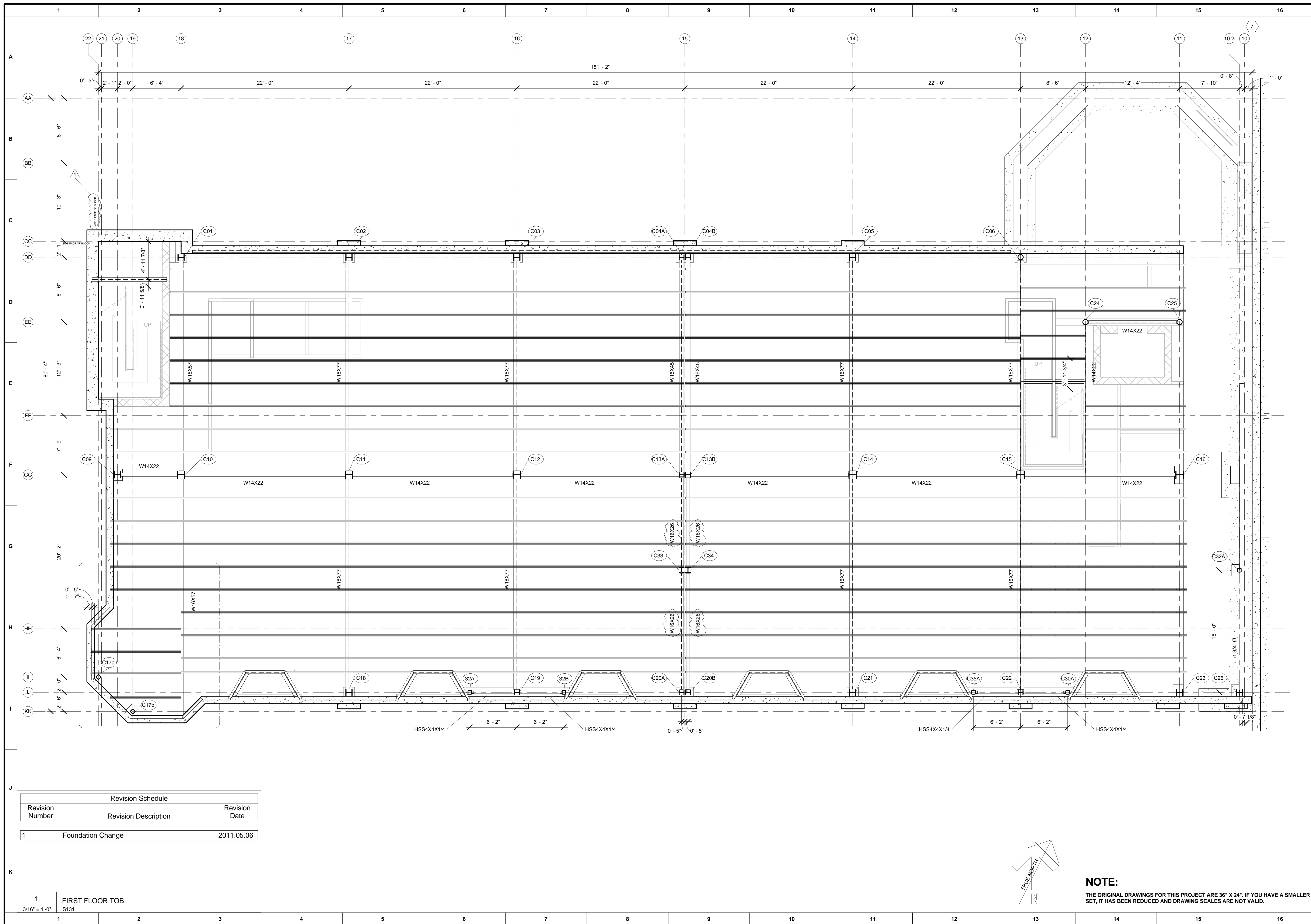
PRELIMINARY DRAWINGS
NOT FOR CONSTRUCTION

Renovation, Restoration, and Addition to the
DINNEEN BUILDING
Cheyenne, Wyoming

APN: 10.2.161 Date Issued: 2011.06.06
Drawn By: CET Checked By: RLB

Sheet Title:
ROTUNDA FRAMING

Sheet Number:
S104



Revision Schedule		
Revision Number	Revision Description	Revision Date
1	Foundation Change	2011.05.06

1 FIRST FLOOR TOB
3/16" = 1'-0"
S131

The Design Studio, inc.
Architecture + Interior Design
1906 Thomas Avenue, Cheyenne, Wyoming 82001
T) 307.775.9970
F) 307.775.9946

TDSi

PRELIMINARY DRAWINGS
NOT FOR CONSTRUCTION

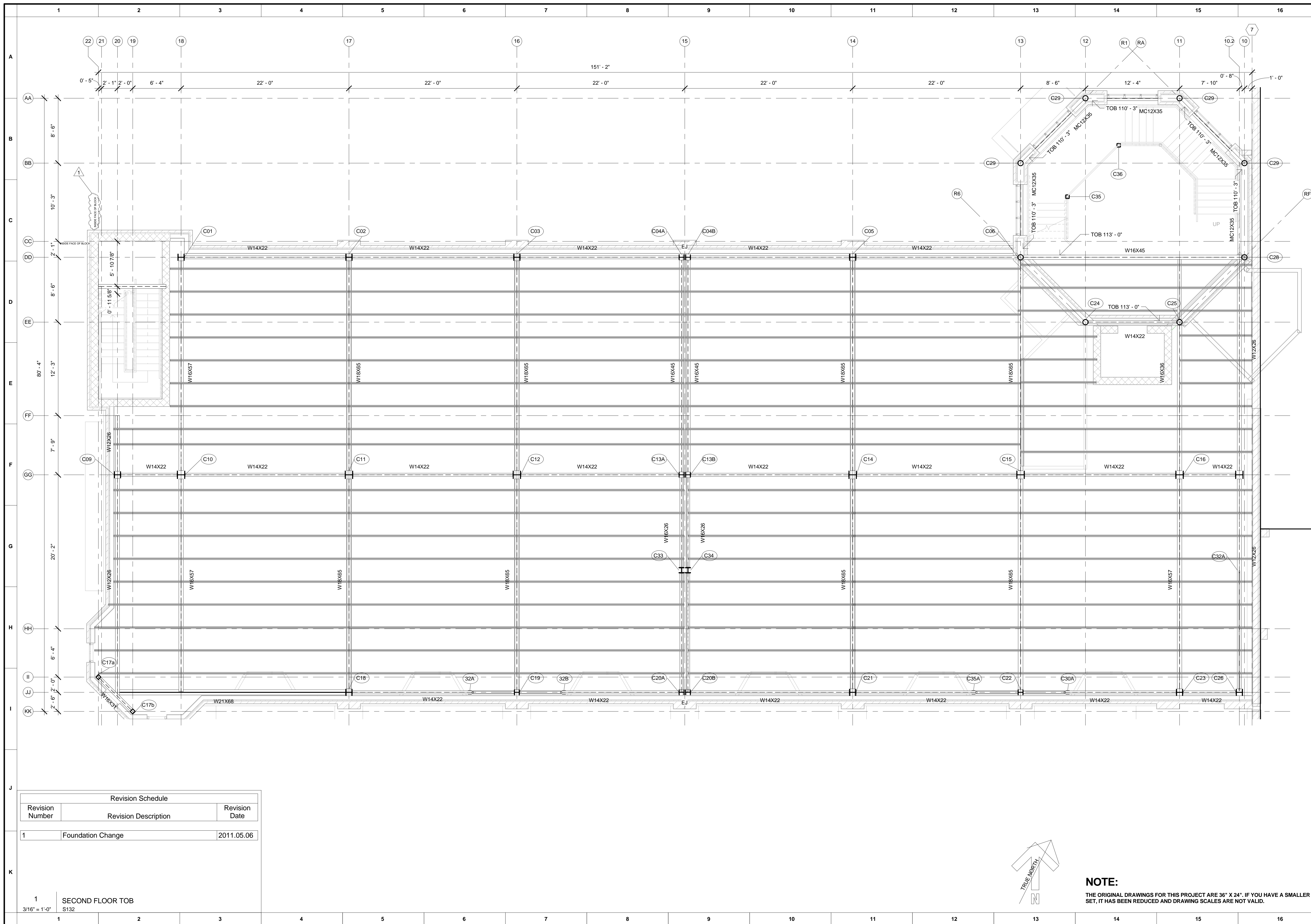
Renovation, Restoration, and Addition to the
DINNEEN BUILDING
Cheyenne, Wyoming

APN: 10.2.161 Date Issued: 2011.06.06
Drawn By: CET Checked By: RLB
Sheet Title:

1ST FLOOR FRAMING

Sheet Number:
S131

NOTE:
THE ORIGINAL DRAWINGS FOR THIS PROJECT ARE 36" X 24". IF YOU HAVE A SMALLER SET, IT HAS BEEN REDUCED AND DRAWING SCALES ARE NOT VALID.



Revision Schedule		
Revision Number	Revision Description	Revision Date
1	Foundation Change	2011.05.06

1 SECOND FLOOR TOB
 3/16" = 1'-0"
 S132

The Design Studio, inc.
 Architecture + Interior Design
 1906 Thomas Avenue, Cheyenne, Wyoming 82001
 T) 307.775.9970

TDSi

PRELIMINARY DRAWINGS
 NOT FOR CONSTRUCTION

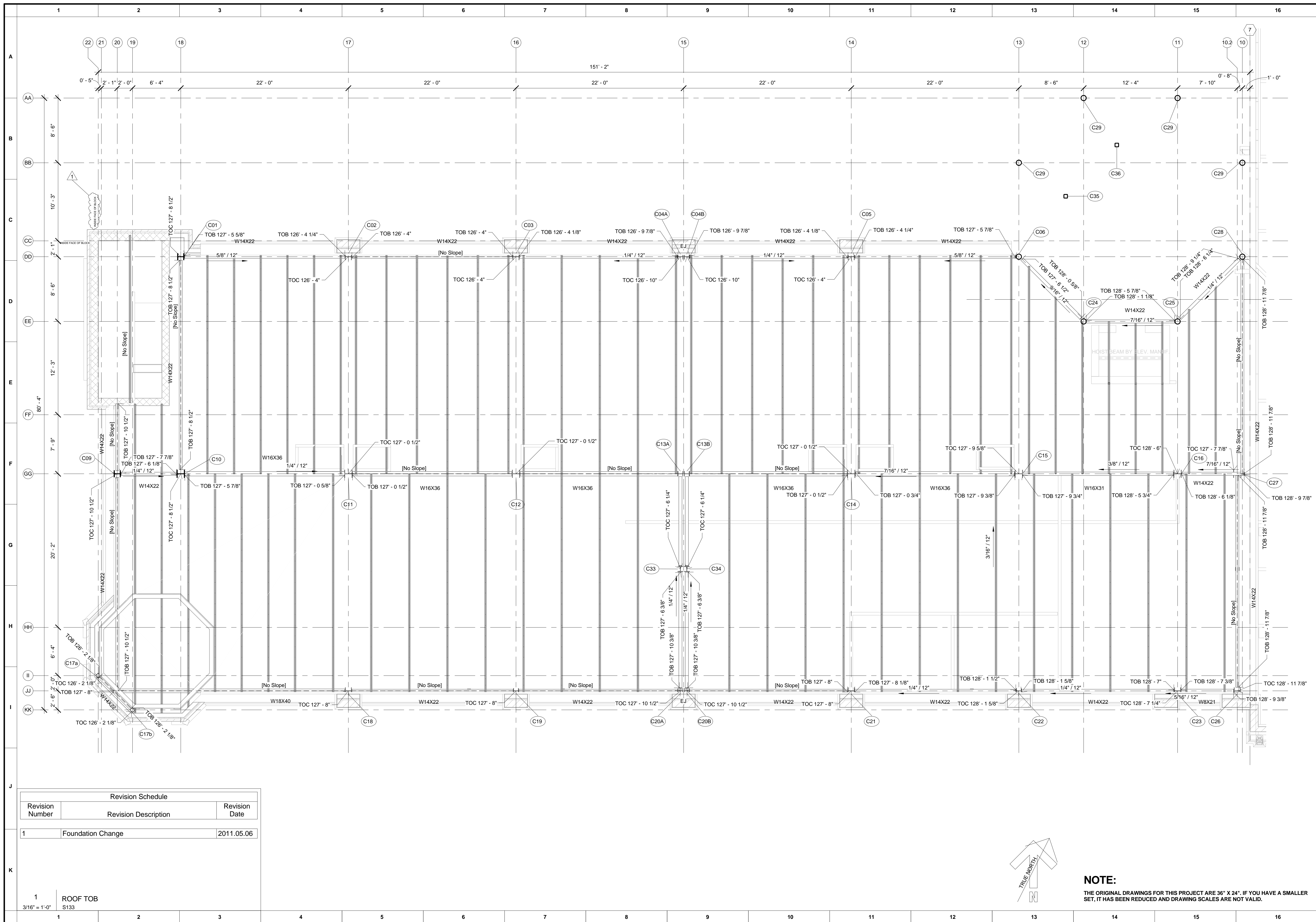
Renovation, Restoration, and Addition to the
DINNEEN BUILDING
 Cheyenne, Wyoming

APN: 10.2.161 Date Issued: 2011.06.06
 Drawn By: CET Checked By: RLB
 Sheet Title:

2ND FLOOR FRAMING

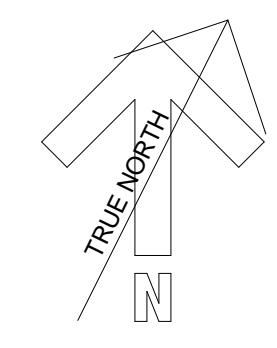
Sheet Number:
S132

NOTE:
 THE ORIGINAL DRAWINGS FOR THIS PROJECT ARE 36" X 24". IF YOU HAVE A SMALLER SET, IT HAS BEEN REDUCED AND DRAWING SCALES ARE NOT VALID.



Revision Schedule		
Revision Number	Revision Description	Revision Date
1	Foundation Change	2011.05.06

1 ROOF TOB
S133



NOTE:
THE ORIGINAL DRAWINGS FOR THIS PROJECT ARE 36" X 24". IF YOU HAVE A SMALLER SET, IT HAS BEEN REDUCED AND DRAWING SCALES ARE NOT VALID.

The Design Studio, inc.
Architecture + Interior Design
1906 Thomas Avenue, Cheyenne, Wyoming 82001
T) 307.775.9970

TDSi

PRELIMINARY DRAWINGS
NOT FOR CONSTRUCTION

Renovation, Restoration, and Addition to the
DINNEEN BUILDING
Cheyenne, Wyoming

APN: 10.2.161 Date Issued: 2011.06.06
Drawn By: CET Checked By: RLB
Sheet Title:

ROOF FRAMING

Sheet Number:
S133