

BLUFFS VETERINARY CLINIC

722 West 7th Street
PO Box 550
Pine Bluffs, WY. 82082



VAUGHT FRYE LARSON architects

Strength in design. Strength in partnership.
Strength in community.

401 West Mountain Avenue, Suite 100 Fort Collins, CO 80521
ph: 970.224.1191 www.theartofconstruction.com

IN ASSOCIATION WITH:

SYSTEM NOTES

WALLS

WALL NOTES: ALL WALLS P1 U.N.O.

P1 2x4" WOOD STUD WALL WITH 5/8" GYPSUM BOARD ON BOTH SIDES

P2 2x6" WOOD STUD WALL WITH 5/8" GYPSUM BOARD ON BOTH SIDES

CEILING

CEILING NOTES: ALL CEILING AT 8'-0" U.N.O.

C1 NEW GRID AND NEW ACCT. CEILING TILE, 24"x48" ARMSTRONG ARMATUFF LAY-IN, MEDIUM TEXTURE.

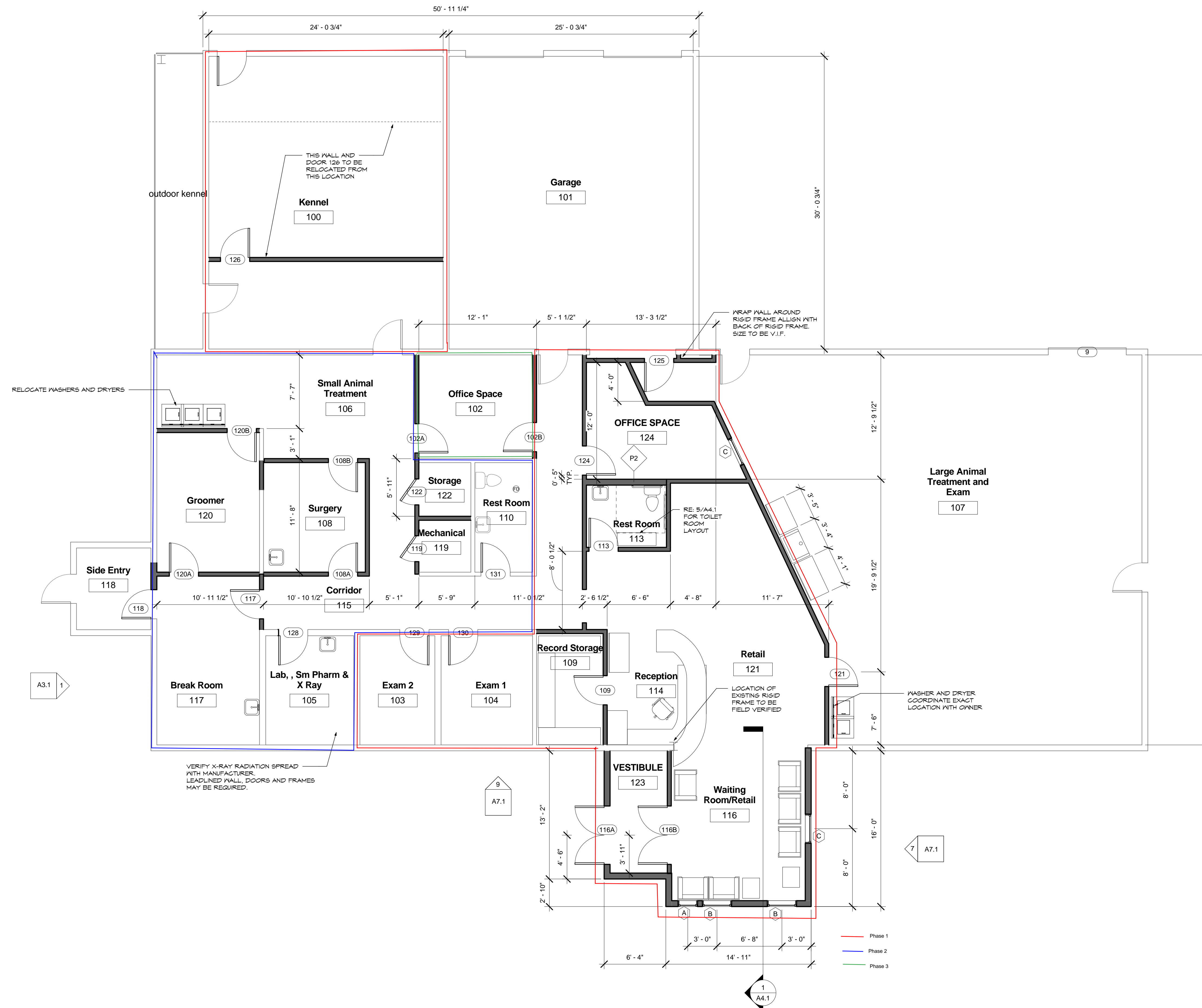
C2 5/8" GYPSUM BOARD (PAINTED - SMOOTH FINISH) METAL SUSPENSION SYSTEM.

C3 EXTERIOR METAL SOFFIT SYSTEM TO MATCH EXISTING.

KEY NOTE

NEW WALLS

EXISTING WALLS



Project Status

Issue	No.	Description	Date
1	CONSTRUCTION DOCUMENTS	12-18-2012	
2			
3			
4			

Revisions	No.	Description	Date
1			
2			
3			

DRAWN BY: DRW MvG

CHECKED BY: CHK GD

SEAL:

COPYRIGHT: VAUGHT FRYE LARSON ARCHITECTS, INC. 2011.
THIS DRAWING MAY NOT BE PHOTOGRAPHED, SCANNED, TRACED OR COPIED IN ANY MANNER WITHOUT THE WRITTEN PERMISSION OF VFLA.

FLOOR PLAN

DRAWING NUMBER:

A1.0