

BLUFFS VETERINARY CLINIC REMODEL CONSTRUCTION DOCUMENTS

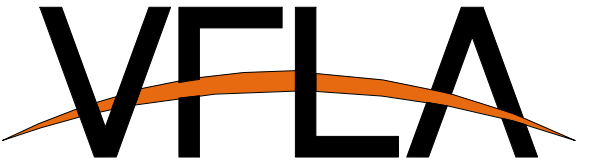
01 / 17 / 2013

SHEET INDEX

ARCHITECTURAL	
A0.0	COVER SHEET
A0.1	DEMOLITION PLANS
A1.0	FLOOR PLAN
A2.1	REFLECTED CEILING PLAN
A3.1	ELEVATIONS
A4.1	WALL SECTIONS AND DETAILS
A7.1	DOOR & WINDOW SCHEDULE

BLUFFS VETERINARY CLINIC

722 West 7th Street
PO Box 550
Pine Bluffs, WY. 82082



VAUGHT FRYE LARSON architects

Strength in design. Strength in partnership.
Strength in community.

401 West Mountain Avenue, Suite 100 Fort Collins, CO 80521
ph: 970.224.1191 www.theartofconstruction.com

IN ASSOCIATION WITH:

ABBREVIATIONS			
#	FOUND(S) or NUMBER	F.O.	FURNISH & INSTALL BY OTHERS
&	AND	F.O.C.	FACE OF CONCRETE
°	ANGLE	F.O.F.	FACE OF FINISH
@	AT	F.O.S.	FACE OF STUDS
A.D.	AREA DRAIN	F.R.T.	FIRE RETARDANT TREATED
A.F.F.	ABOVE FINISHED FLOOR	F.S.	FULL SIZE
ABV.	ABOVE	FACP	FIRE ALARM CONTROL PANEL
ACT.	ACOUSTICAL CEILING TILE	FDN.	FOUNDATION
ADJ.	ADJACENT or ADJUSTABLE	FEC.	FIRE EXTINGUISHER CABINET
ALT.	ALTERNATE	FHC.	FIRE HOSE CABINET
ALUM.	ALUMINUM	FIN.	FINISHED
ARCH.	ARCHITECTURAL	FIXT.	FIXTURE
ASPH.	ASPHALT	FL.	FLOORING
		FLASH.	FLASHING
		FLOOR.	FLOORING
		FLUOR.	FLUORESCENT
		FT.	FOOT OR FEET
B.M.	BENCH MARK	FTB.	FOOTING
BD.	BOARD	FURR.	FURSING
BLDG.	BUILDING		
BLKG.	BLOCKING	G.B.	GRAB BAR
BOT.	BOTTOM	G.C.	GENERAL CONTRACTOR
BRG.	BEARING	G.I.	GALVANIZED IRON
BSMT.	BASEMENT	GA.	GAUGE
		GALV.	GALVANIZED
C.B.	CATCH BASIN	GL.	GLASS or GLAZING
C.C.	CENTER TO CENTER	GRD.	GROUND
C.G.	CORNER GUARD	GR.	GRADE
C.J.	CONTROL JOINT	GYP.	GYP-SUM
C.T.	CERAMIC TILE	GYP. BD.	GYP-SUM BOARD
CAB.	CABINET		
CEM.	CEMENT	H.B.	HOSE BIB
CL.	CENTERLINE	H.C.	HOLLOW CORE
CLG.	CEILING	H.M.	HOLLOW METAL
CLKG.	CALLKING	HW.	Hardware
CLD.	CLOSET	HW.	Hardware
CLR.	CLEAR	HGT.	HEIGHT
CMU	CONCRETE MASONRY UNIT	HORIZ.	HORIZONTAL
CNTR.	COUNTER	HR.	HOUR
COL.	COLUMN		
CONC.	CONCRETE	I.B.C.	INSTALL BY CONTRACTOR
CONN.	CONNECTION	I.B.O.	INSTALL BY OTHERS
CONSTR.	CONSTRUCTION	I.D.	INSIDE DIAMETER (DIM.)
CONTR.	CONTRACTOR	IN.	INCH
CONTR.	CONTRACTOR	INS.	INSULATION or INSULATED
COVR.	CORRIDOR	INT.	INTERIOR
CPT.	CARPET	JAN.	JANITOR
CTR.	CENTER	JT.	JOINT
		KIT.	KITCHEN
D.F.	DRINKING FOUNTAIN	KL.	KITCHEN
D.O.	DOOR OPENING	KL.	KITCHEN
D.O.S.	DOWNSPOUT	KL.	KITCHEN
DBL.	DOUBLE	L.S.	LANDSCAPE
DEPT.	DEPARTMENT	L.W.	LIGHT WEIGHT
DET.	DETAIL	LAB.	LABORATORY
DIA.	DIAMETER	LAM.	LAMINATE
DM.	DIAMENSION	LAV.	LAVATORY
DISP.	DISPENSER	LT.	LIGHT
DN.	DOWN	LVR.	LOUVER
DR.	DOOR	M.O.	MASONRY OPENING
DWG.	DRAWING	MAS.	MASONRY
DWR.	DRAWER	MATL.	MATERIAL
		MAX.	MAXIMUM
(E)	EXISTING	MECH.	MECHANICAL
E.	EAST	MFR.	MANUFACTURER
E.H.	EXHAUST FAN	MIN.	MINIMUM
E.J.	EXPANSION JOINT	MIR.	MIRROR
E.O.S.	EDGE OF SLAB	MISC.	MISCELLANEOUS
E.P.	ELECTRICAL PANELBOARD	MTL.	METAL
E.W.C.	ELECTRIC WATER COOLER	MUL.	MULLION
EA.	EACH		
ELEC.	ELECTRICAL	N	NORTH
ELEV.	ELEVATOR	N.C.	NOT IN CONTRACT
EM.	EMERGENCY OUTLET	N.T.S.	NOT TO SCALE
EMER.	EMERGENCY	NO. or #	NUMBER
ENCL.	ENCLOSURE	NOM.	NOMINAL
EQ.	EQUAL	O.A.L.	OVERALL LENGTH
EQUIP.	EQUIPMENT	O.C.	ON CENTER
EXIST.	EXISTING	O.D.	OUTSIDE DIAMETER (DIM.)
EXP.	EXPANSION	O.H.	OPPOSITE HAND
EXT.	EXTERIOR	OS.	OPPOSITE
F.A.	FIRE ALARM	OFF.	OFFICE
F.B.T.	FURNISH BY TENANT	ORNG.	OPENING
F.D.	FLOOR DRAIN	OPP.	OPPOSITE
F.E.	FIRE EXTINGUISHER		
F.F.	FINISH FLOOR		
		P.T.	PRESERVATIVE PRESSURE TREATED
		P.T.D.	PAPER TOWEL DISPENSER
		P.T.M.	PAINT TO MATCH
		PLAM.	PLASTIC LAMINATE
		PLAS.	PLASTER
		PLWD.	PLYWOOD
		PR.	PAIR
		PRCST.	PRE-CAST
		PTD.	PAINTED
		PTN.	PARTITION
		Q.T.	QUARRY TILE
		R.	RISER
		R.D.	ROOF DRAIN
		R.F.	RESILIENT FLOORING
		R.O.	ROUGH OPENING
		R.O.D.	ROOF OVERFLOW DRAIN
		RAD.	RADIUS
		RE.	REFER TO or REFERENCE
		REC.	RECESSED
		REF.	REFRIGERATOR
		REG.	REGISTER
		RENF.	REINFORCED
		REQ.	REQUIRED
		RESIL.	RESILIENT
		RFG.	ROOFING
		RM.	ROOM
		S.	SOUTH
		S.C.	SOLID CORE
		S.D.	SOAP DISPENSER
		S.N.D.	SANITARY NAPKIN DISPENSER
		S.S.	SERVICE SINK
		S.S.	STAINLESS STEEL
		S.T.M.	STAIN TO MATCH
		SCHED.	SCHEDULE
		SECT.	SECTION
		S.F.	SQUARE FEET
		SH.	SHelf
		SHT.	SHEET
		SHTG.	SHEATHING
		SIM.	SIMILAR
		SPEC.	SPECIFICATIONS
		SQ.	SQUARE
		STA.	STATION
		STD.	STANDARD
		STL.	STEEL
		STOR.	STORAGE
		STR.	STRUCTURE or STRUCTURAL
		SUSP.	SUSPENDED
		SYM.	SYMMETRICAL
		SYS.	SYSTEM
		T&G.	TONGUE AND GROOVE
		T.B.	TONGUE BAR
		T.O.	TOP OF
		T.P.D.	TOILET PAPER DISPENSER
		TEL.	TELEPHONE
		TER.	TERRAZZO
		TH.	THRESHOLD
		TYP.	TYPICAL
		U.L.	UNDERWRITER'S LABORATORY
		U.N.O.	UNLESS NOTED OTHERWISE
		U.O.S.	UNLESS OTHERWISE SPECIFIED
		UNF.	UNFINISHED
		V.B.	VAPOR BARRIER
		VCT.	VINYL COMPOSITION TILE
		VERT.	VERTICAL
		VEST.	VESTIBULE
		VWC.	VINYL WALL COVERING
		W.	WEST
		W.C.	WATER CLOSET
		W.W.F.	WELED WIRE FABRIC
		W.	WITH
		W/O.	WITHOUT
		WD.	WOOD
		WF.	WIRE FLANGE
		WIN.	WINDOW
		WP.	WATERPROOFING
		WSCT.	WAINSCOT

DRAFTING SYMBOLS	
	FLOOR PLAN
	BUILDING SECTION
	WALL SECTION
	ELEVATION TAG
	DOOR TAG
	COLUMN GRIDS
	WINDOW TAG
	SYSTEM NOTES
	ROOM NAME
	ROOM TAG
	PARTITION TYPE
	SHEET NOTES

PROJECT DIRECTORY	
BLUFFS VETERINARY CLINIC	OWNER
722 WEST 7TH STREET PINE BLUFFS, WY. 82082 (307) 245-4263 (307) 245-4264 FAX CONTACT: DR. BILL SHAN, DVM	
VFLA, INC.	ARCHITECT
401 WEST MOUNTAIN AVE., SUITE 100 FORT COLLINS, CO 80521 (970) 224-1191 (970) 224-1662 FAX CONTACT: MARCEL VAN GARDEREN	

Project Status		
Issued		
No.	Description	Date
1	CONSTRUCTION DOCUMENTS	01-17-2013
2		
3		
4		
Revisions		
No.	Description	Date
1		
2		
3		
DRAWN BY: DRW MvG		
CHECKED BY: CHK GD		
SEAL:		

COPYRIGHT: VAUGHT FRYE LARSON ARCHITECTS, INC. 2011.
THIS DRAWING MAY NOT BE PHOTOCOPIED, SCANNED, TRACED OR
COPIED IN ANY MANNER WITHOUT THE WRITTEN PERMISSION OF VFLA.

COVER SHEET

DRAWING NUMBER:

A0.0

BLUFFS VETERINARY CLINIC

722 West 7th Street
PO Box 550
Pine Bluffs, WY. 82082



VAUGHT FRYE LARSON architects

Strength in design. Strength in partnership.
Strength in community.

401 West Mountain Avenue, Suite 100 Fort Collins, CO 80521
ph: 970.224.1191 www.theartofconstruction.com

IN ASSOCIATION WITH:

Project Status

Issued	No.	Description	Date
	1	CONSTRUCTION DOCUMENTS	01-17-2013
	2		
	3		
	4		

Revisions	No.	Description	Date
	1		
	2		
	3		

DRAWN BY: DRW MvG

CHECKED BY: CHK GD

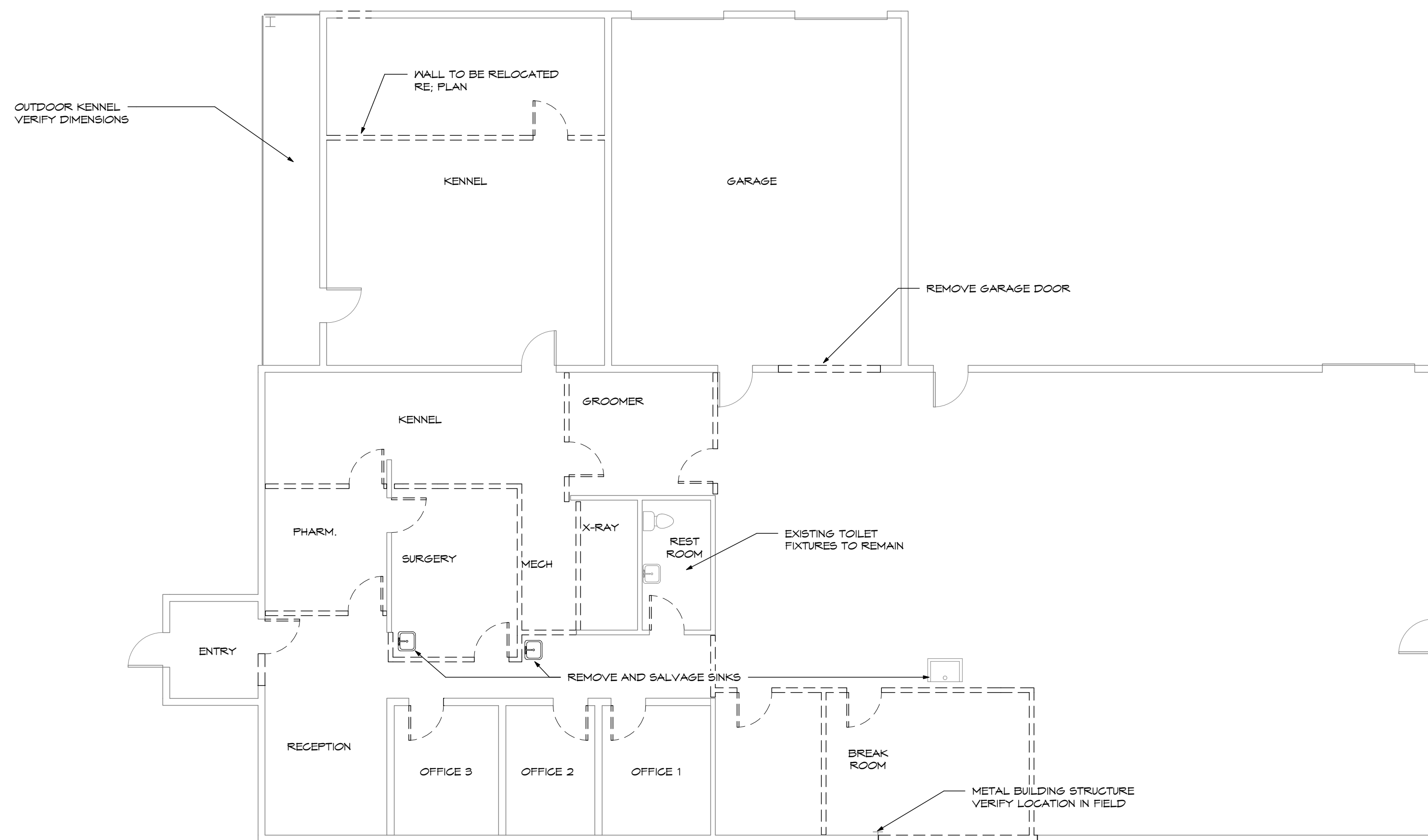
SEAL:

COPYRIGHT: VAUGHT FRYE LARSON ARCHITECTS, INC. 2011.
THIS DRAWING MAY NOT BE PHOTOGRAPHED, SCANNED, TRACED OR
COPIED IN ANY MANNER WITHOUT THE WRITTEN PERMISSION OF VFLA.

DEMOLITION PLANS

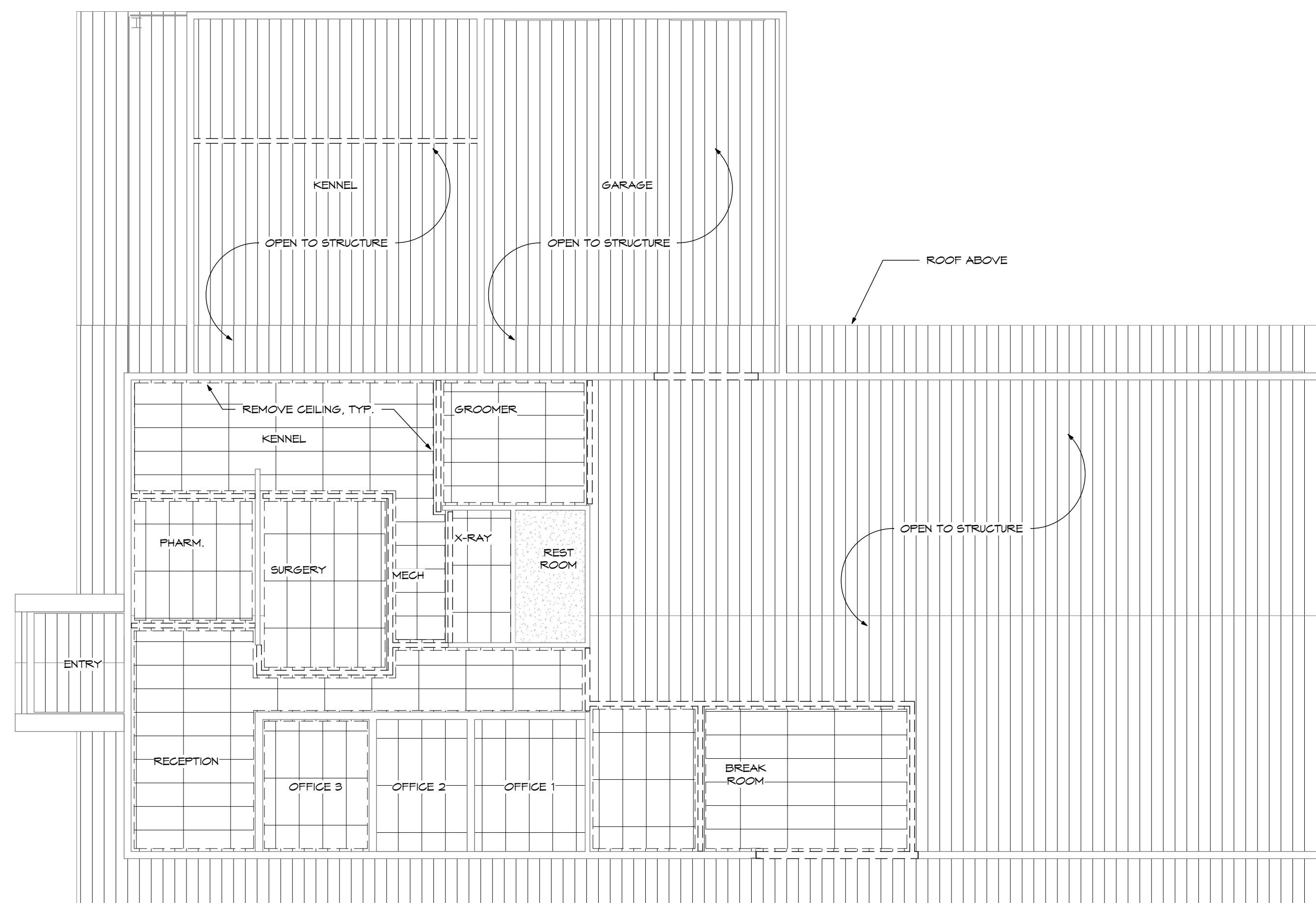
DRAWING NUMBER:

A0.1



KEY NOTE	
--- --	WALL TO BE DEMOLISHED
--- --	CEILINGS TO BE DEMOLISHED

1 DEMOLITION PLAN
1/8" = 1'-0"



2 RCP DEMOLITION PLAN
1/8" = 1'-0"

BLUFFS VETERINARY CLINIC

722 West 7th Street
PO Box 550
Pine Bluffs, WY. 82082



VAUGHT FRYE LARSON architects

Strength in design. Strength in partnership.
Strength in community.

401 West Mountain Avenue, Suite 100 Fort Collins, CO 80521
ph: 970.224.1191 www.theartofconstruction.com

IN ASSOCIATION WITH:

SYSTEM NOTES

WALLS

WALL NOTES: ALL WALLS P1 U.N.O.

P1 2"x4" WOOD STUD WALL WITH 5/8" GYPSUM BOARD ON BOTH SIDES

P2 2"x6" WOOD STUD WALL WITH 5/8" GYPSUM BOARD ON BOTH SIDES

CEILING

CEILING NOTES: ALL CEILING AT 8'-0" U.N.O.

C1 NEW GRID AND NEW ACCT CEILING TILE, 24"x48" ARMSTRONG ARMATUFF LAY-IN, MEDIUM TEXTURE.

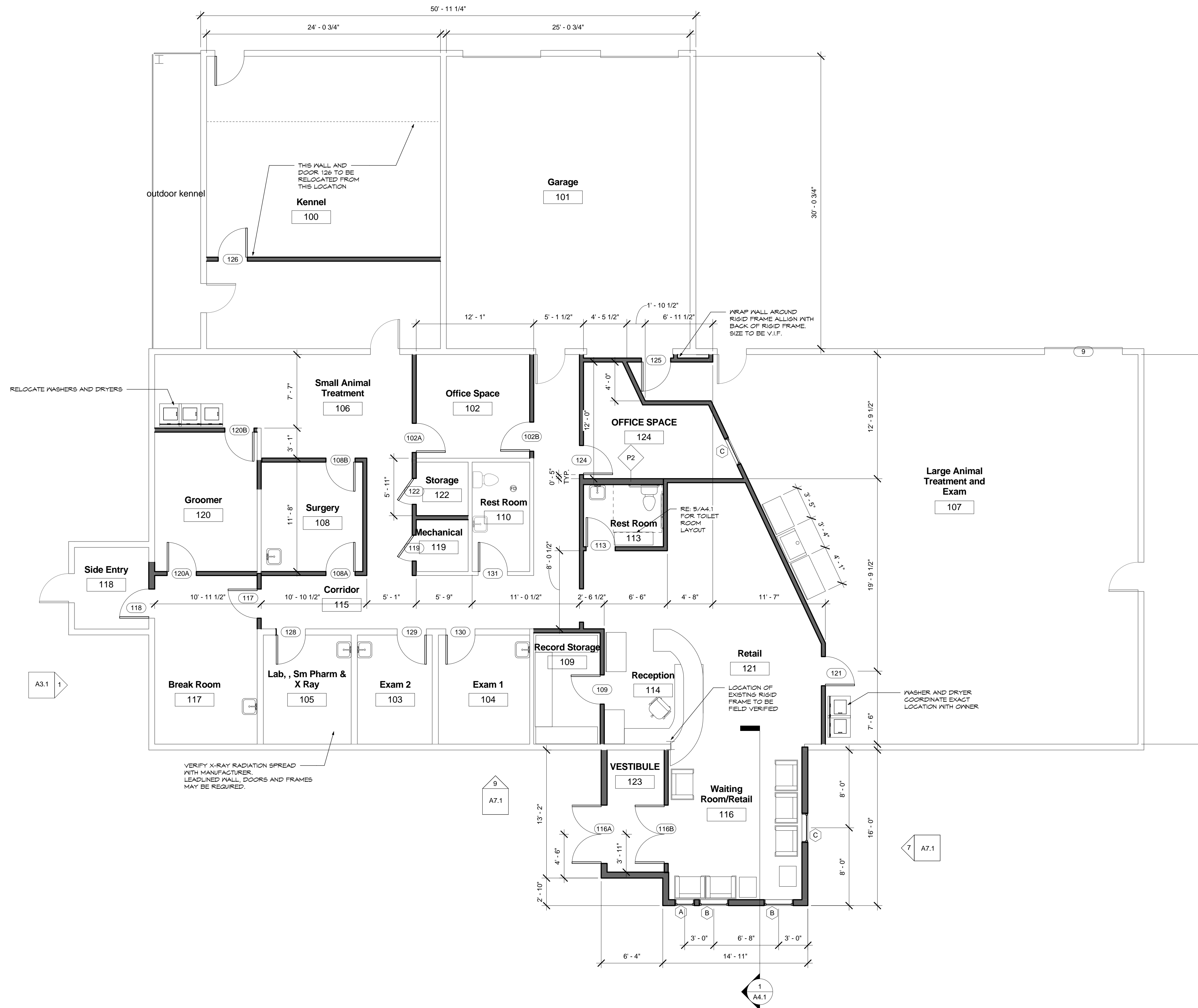
C2 5/8" GYPSUM BOARD (PAINTED - SMOOTH FINISH) METAL SUSPENSION SYSTEM.

C3 EXTERIOR METAL SOFFIT SYSTEM TO MATCH EXISTING.

KEY NOTE

NEW WALLS

EXISTING WALLS



Project Status

Issue	No.	Description	Date
1	CONSTRUCTION DOCUMENTS	01-17-2013	
2			
3			
4			

Revisions	No.	Description	Date
1			
2			
3			

DRAWN BY: DRW MvG

CHECKED BY: CHK GD

SEAL:

COPYRIGHT:
VAUGHT FRYE LARSON ARCHITECTS, INC. 2011.
THIS DRAWING MAY NOT BE PHOTOGRAPHED, SCANNED, TRACED OR COPIED IN ANY MANNER WITHOUT THE WRITTEN PERMISSION OF VFLA.

FLOOR PLAN

DRAWING NUMBER:

A1.0

BLUFFS VETERINARY CLINIC

722 West 7th Street
PO Box 550
Pine Bluffs, WY. 82082



VAUGHT FRYE LARSON architects

Strength in design. Strength in partnership.
Strength in community.

401 West Mountain Avenue, Suite 100 Fort Collins, CO 80521
ph: 970.224.1191 www.theartofconstruction.com

IN ASSOCIATION WITH:

SYSTEM NOTES

WALLS

WALL NOTES: ALL WALLS P1 U.N.O.

P1 2x4" WOOD STUD WALL WITH 5/8" GYPSUM BOARD ON BOTH SIDES

P2 2x6" WOOD STUD WALL WITH 5/8" GYPSUM BOARD ON BOTH SIDES

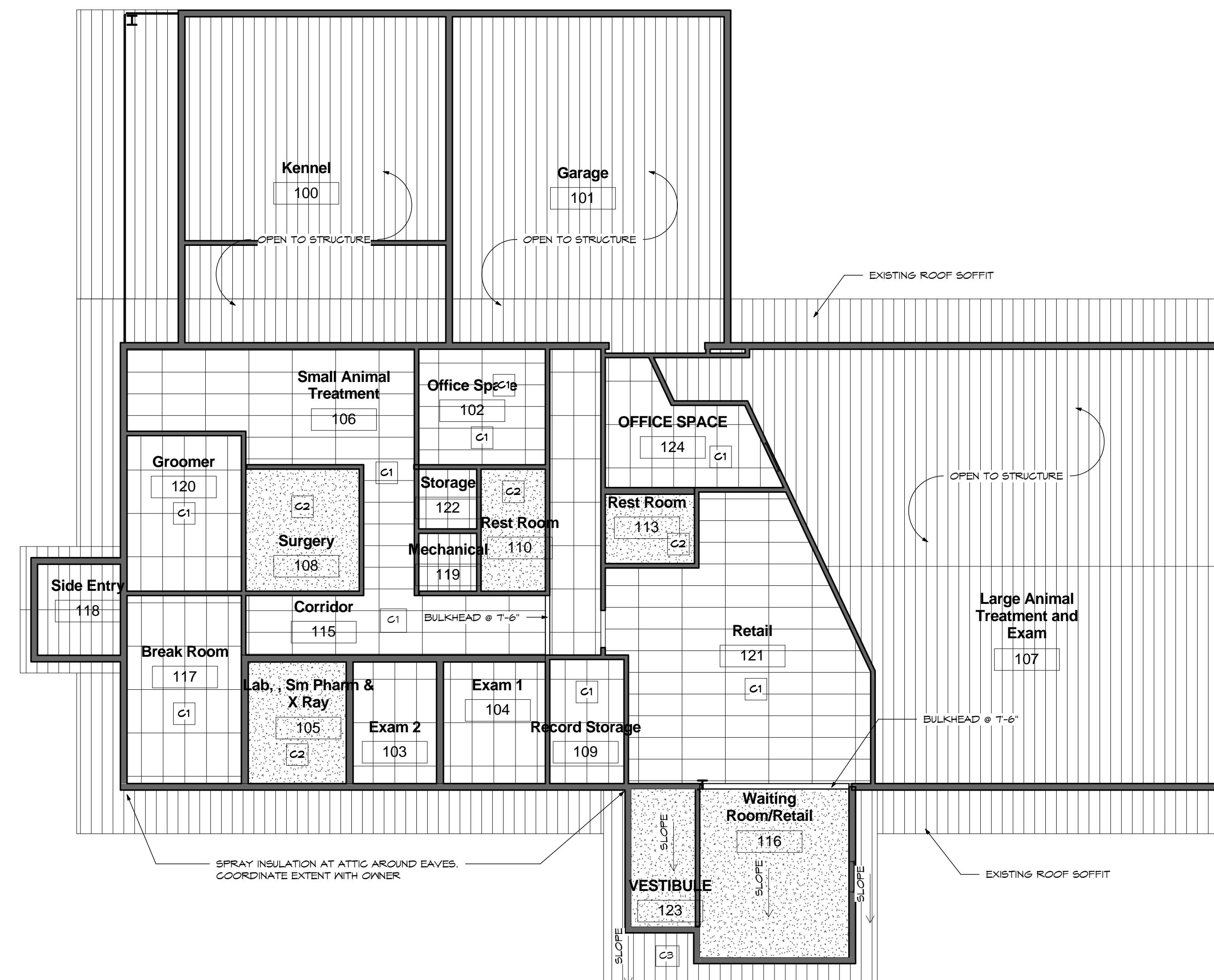
CEILING

CEILING NOTES: ALL CEILING AT 8'-0" U.N.O.

C1 NEW GRID AND NEW ACCT CEILING TILE. 24"x48" ARMSTRONG ARMATUFF LAY-IN, MEDIUM TEXTURE.

C2 5/8" GYPSUM BOARD (PAINTED - SMOOTH FINISH) METAL SUSPENSION SYSTEM.

C3 EXTERIOR METAL SOFFIT SYSTEM TO MATCH EXISTING.



2 RCP PLAN
1/8" = 1'-0"

Project Status

Issued		
No.	Description	Date
1	CONSTRUCTION DOCUMENTS	01-17-2013
2		
3		
4		

Revisions		
No.	Description	Date
1		
2		
3		

DRAWN BY: DRW MvG

CHECKED BY: CHK GD

SEAL:

COPYRIGHT:
VAUGHT FRYE LARSON ARCHITECTS, INC. 2011.
THIS DRAWING MAY NOT BE PHOTOGRAPHED, SCANNED, TRACED OR COPIED IN ANY MANNER WITHOUT THE WRITTEN PERMISSION OF VFLA.

REFLECTED CEILING PLAN

DRAWING NUMBER:

A2.1

BLUFFS VETERINARY CLINIC

722 West 7th Street
PO Box 550
Pine Bluffs, WY, 82082



VAUGHT FRYE LARSON architects

Strength in design. Strength in partnership.
Strength in community.

401 West Mountain Avenue, Suite 100 Fort Collins, CO 80521
ph: 970.224.1191 www.theartofconstruction.com

IN ASSOCIATION WITH:

Project Status

Issued	No.	Description	Date
	1	CONSTRUCTION DOCUMENTS	01-17-2013
	2		
	3		
	4		

Revisions	No.	Description	Date
	1		
	2		
	3		

DRAWN BY: DRW MvG

CHECKED BY: CHK GD

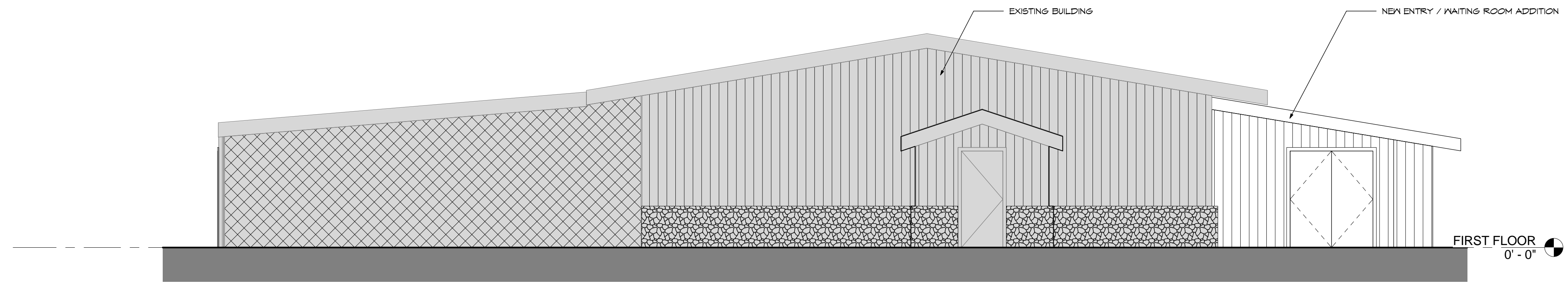
SEAL:

COPYRIGHT: VAUGHT FRYE LARSON ARCHITECTS, INC. 2011.
THIS DRAWING MAY NOT BE PHOTOGRAPHED, SCANNED, TRACED OR
COPIED IN ANY MANNER WITHOUT THE WRITTEN PERMISSION OF VFLA.

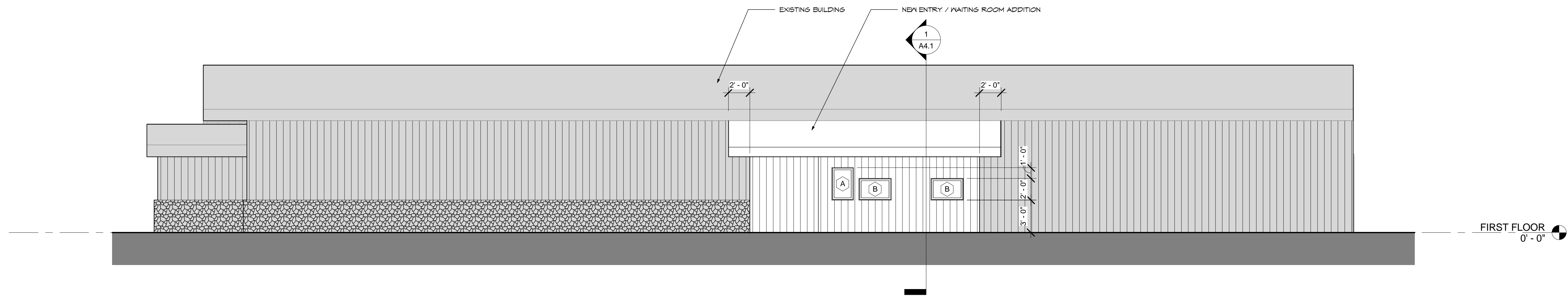
ELEVATIONS

DRAWING NUMBER:

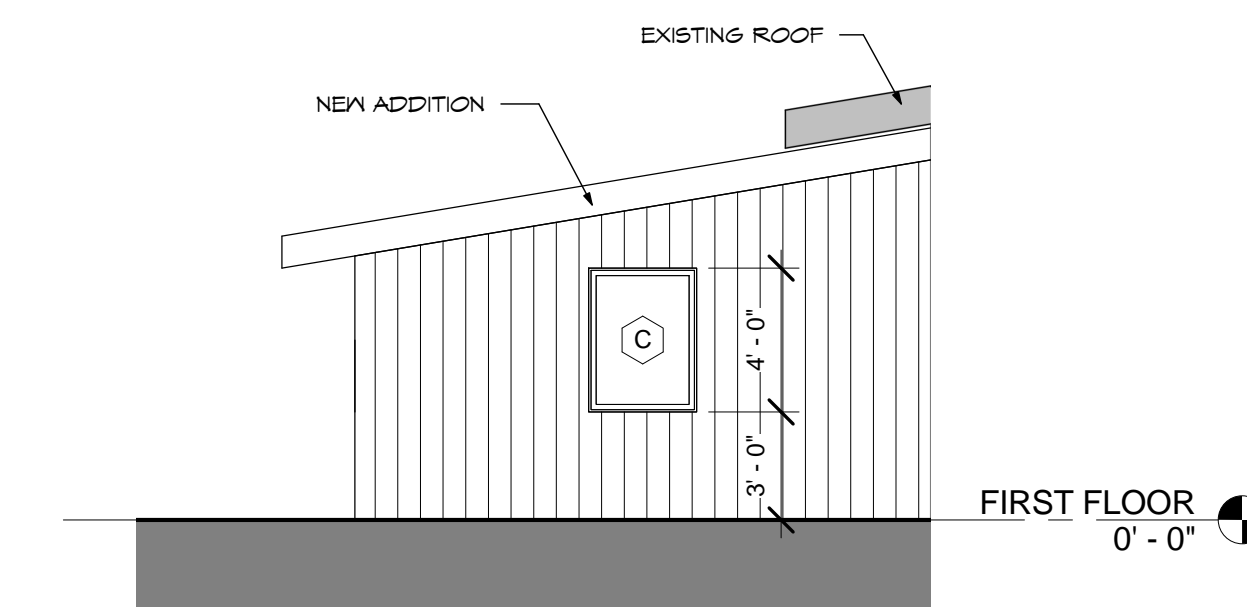
A3.1



① NORTH ELEVATION
3/16" = 1'-0"



② WEST ELEVATION
3/16" = 1'-0"



③ HIDDEN ELEVATION
3/16" = 1'-0"

BLUFFS VETERINARY CLINIC

722 West 7th Street
PO Box 550
Pine Bluffs, WY. 82082



Strength in design. Strength in partnership.
Strength in community.

401 West Mountain Avenue, Suite 100 Fort Collins, CO 80521
ph: 970.224.1191 www.theartofconstruction.com

IN ASSOCIATION WITH:

Project Status

Issued	No.	Description	Date
	1	CONSTRUCTION DOCUMENTS	01-17-2013
	2		
	3		
	4		

Revisions	No.	Description	Date
	1		
	2		
	3		

DRAWN BY: DRW MvG

CHECKED BY: CHK GD

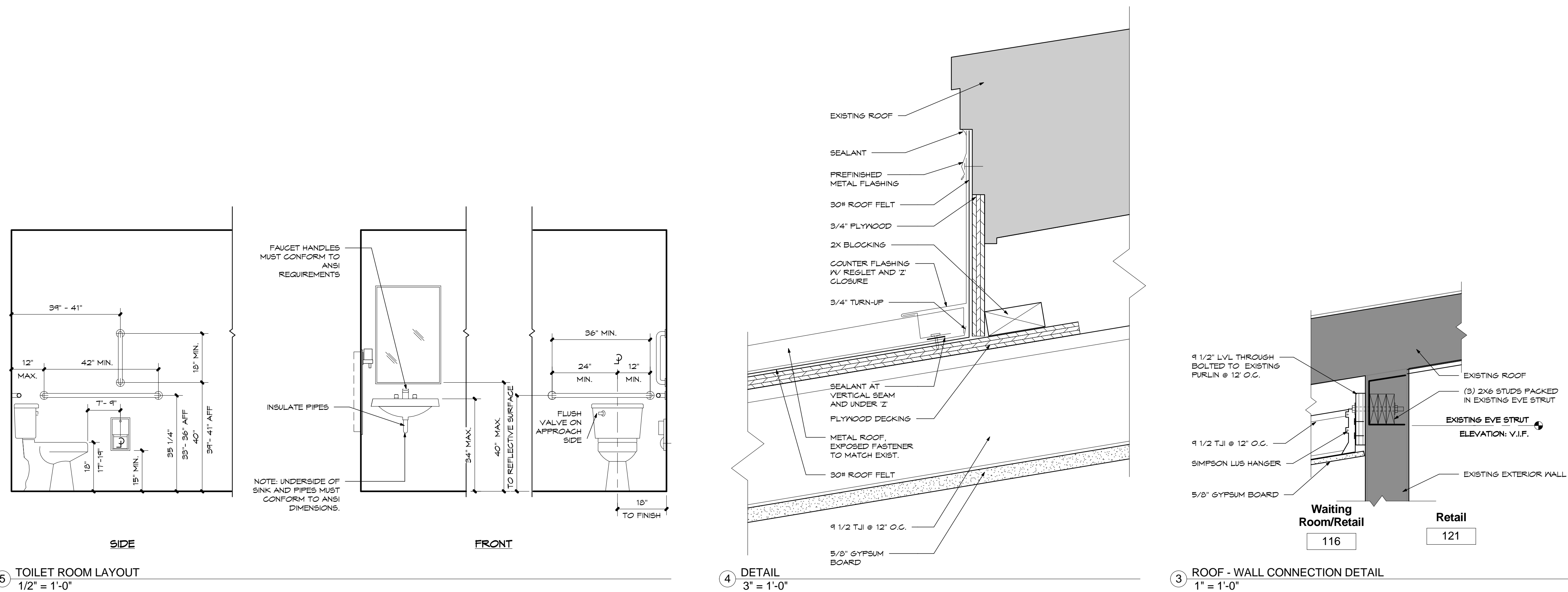
SEAL:

COPYRIGHT: VAUGHT FRYE LARSON ARCHITECTS, INC. 2011.
THIS DRAWING MAY NOT BE PHOTOGRAPHED, SCANNED, TRACED OR COPIED IN ANY MANNER WITHOUT THE WRITTEN PERMISSION OF VFLA.

WALL SECTIONS AND DETAILS

DRAWING NUMBER:

A4.1



BLUFFS VETERINARY CLINIC

722 West 7th Street
PO Box 550
Pine Bluffs, WY. 82082



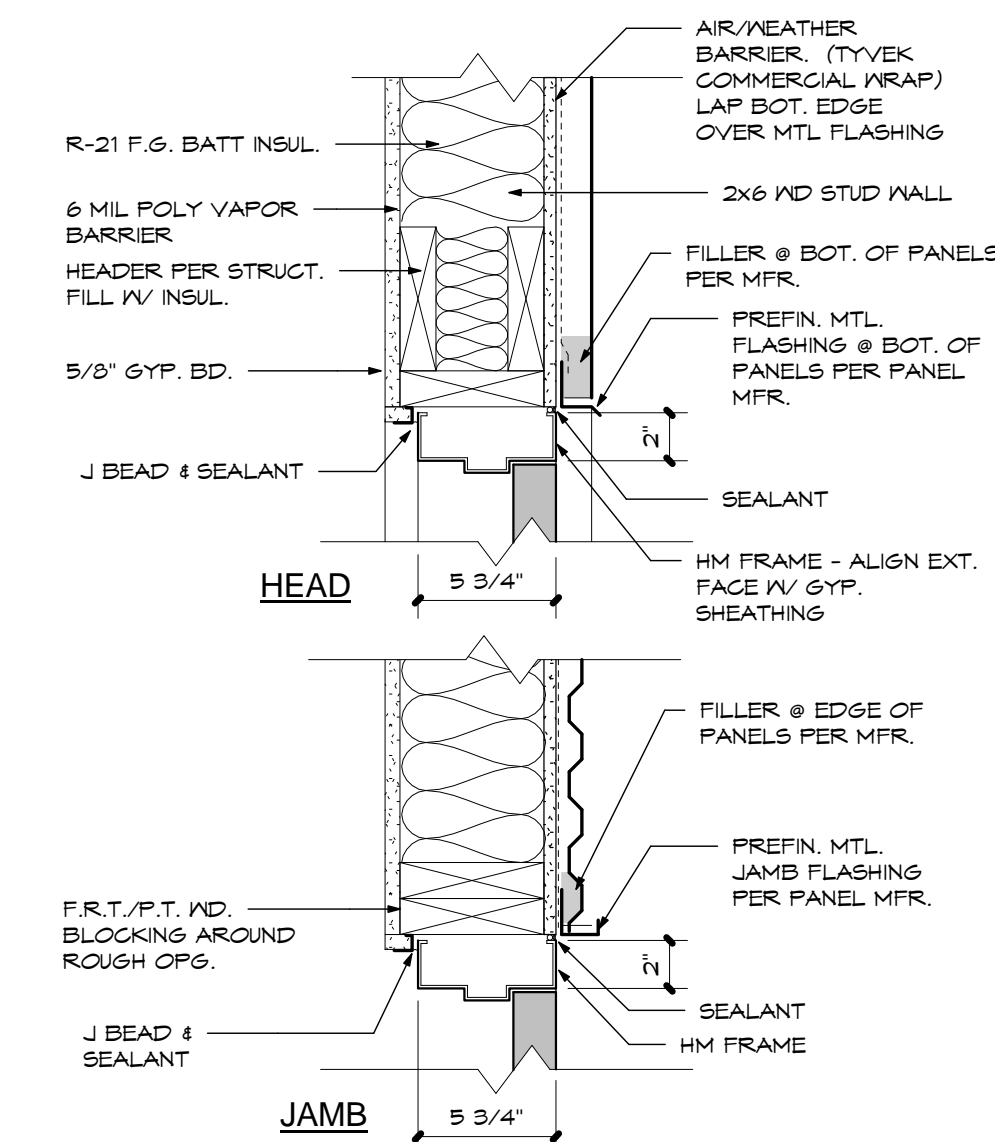
VAUGHT FRYE LARSON architects

Strength in design. Strength in partnership.
Strength in community.

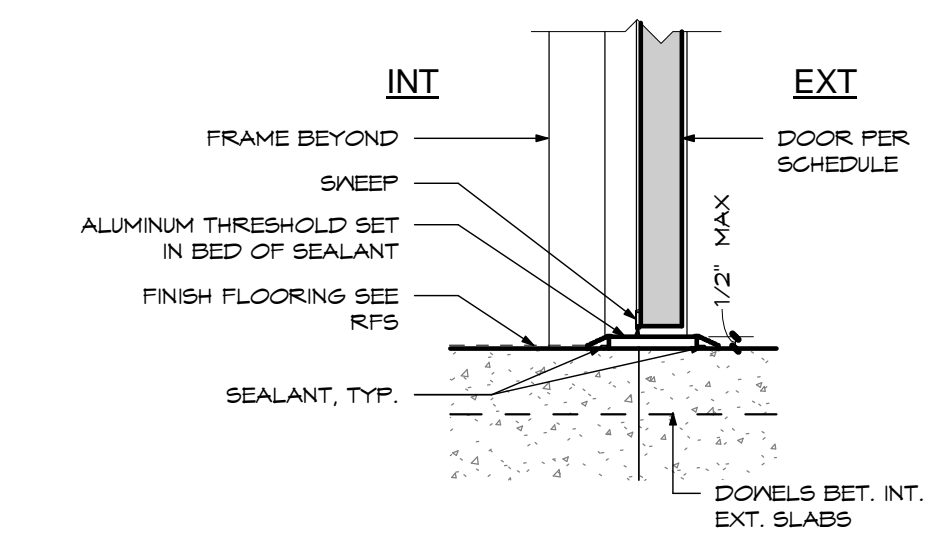
401 West Mountain Avenue, Suite 100 Fort Collins, CO 80521
ph: 970.224.1191 www.theartofconstruction.com

IN ASSOCIATION WITH:

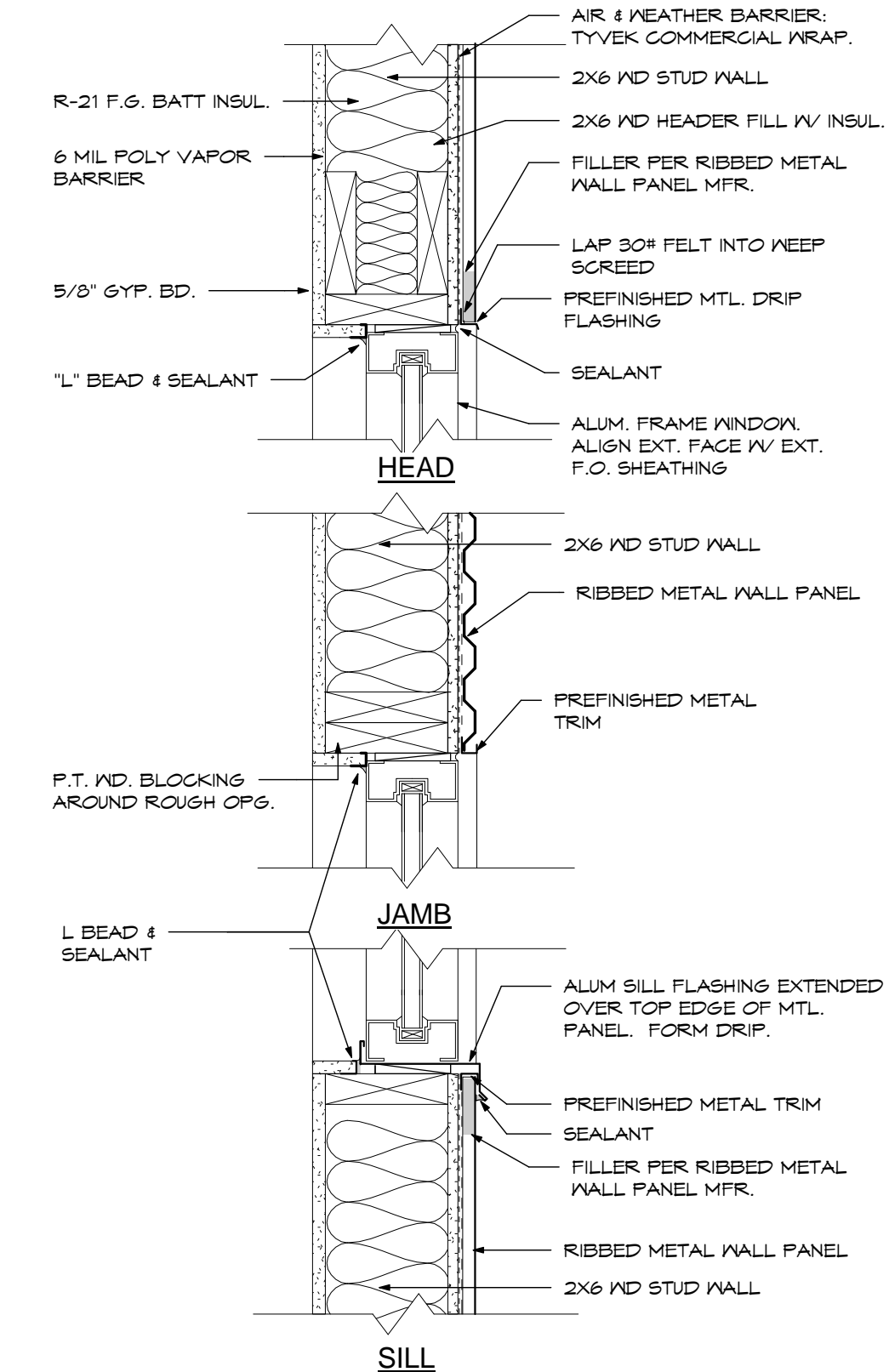
Door No.	Door Size	DOOR PANEL			FRAME			DETAILS		NOTES
		Material	Finish	Type	Frame Material	Frame Finish	Frame Type	Head	Jamb	
102A	3'-0" x 7'-0"	MD	PT	1	HM1	PT	1	6/AT.1	6/AT.1	
102B	3'-0" x 7'-0"	MD	PT	1	HM1	PT	1	6/AT.1	6/AT.1	
108A	3'-0" x 7'-0"	MD	PT	1	HM1	PT	1	6/AT.1	6/AT.1	
108B	3'-0" x 7'-0"	MD	PT	1	HM1	PT	1	6/AT.1	6/AT.1	
109	3'-0" x 7'-0"	MD	PT	1	HM1	PT	1	6/AT.1	6/AT.1	
113	3'-0" x 7'-0"	MD	PT	1	HM1	PT	1	6/AT.1	6/AT.1	
116A	6'-0" x 7'-0"	MD	PT	2	HM1	PT	1	6/AT.1	6/AT.1	
116B	6'-0" x 7'-0"	MD	PT	2	HM1	PT	1	6/AT.1	6/AT.1	
117	3'-0" x 7'-0"	MD	PT	1	HM1	PT	1	6/AT.1	6/AT.1	
118	3'-0" x 7'-0"	MD	PT	1	HM1	PT	1	6/AT.1	6/AT.1	
119	2'-0" x 6'-8"	MD	PT	1	HM1	PT	1	6/AT.1	6/AT.1	
120A	3'-0" x 7'-0"	MD	PT	1	HM1	PT	1	6/AT.1	6/AT.1	
120B	3'-0" x 7'-0"	MD	PT	1	HM1	PT	1	6/AT.1	6/AT.1	
121	3'-0" x 7'-0"	MD	PT	1	HM1	PT	1	6/AT.1	6/AT.1	
122	2'-0" x 6'-8"	MD	PT	1	HM1	PT	1	6/AT.1	6/AT.1	
124	3'-0" x 7'-0"	MD	PT	1	HM1	PT	1	6/AT.1	6/AT.1	
125	3'-0" x 7'-0"	MD	PT	1	HM1	PT	1	6/AT.1	6/AT.1	
126										RE-USE DOOR 121 FROM DEMOD WALL (SEE PLAN) THIS DOOR TO BE RE-USED AS DOOR 126
127										
128	MATCH EXISTING OPENING	MD	PT	1	HM1	PT	1			MATCH EXISTING DETAIL
129	MATCH EXISTING OPENING	MD	PT	1	HM1	PT	1			MATCH EXISTING DETAIL
130	MATCH EXISTING OPENING	MD	PT	1	HM1	PT	1			MATCH EXISTING DETAIL
131	MATCH EXISTING OPENING	MD	PT	1	HM1	PT	1			MATCH EXISTING DETAIL



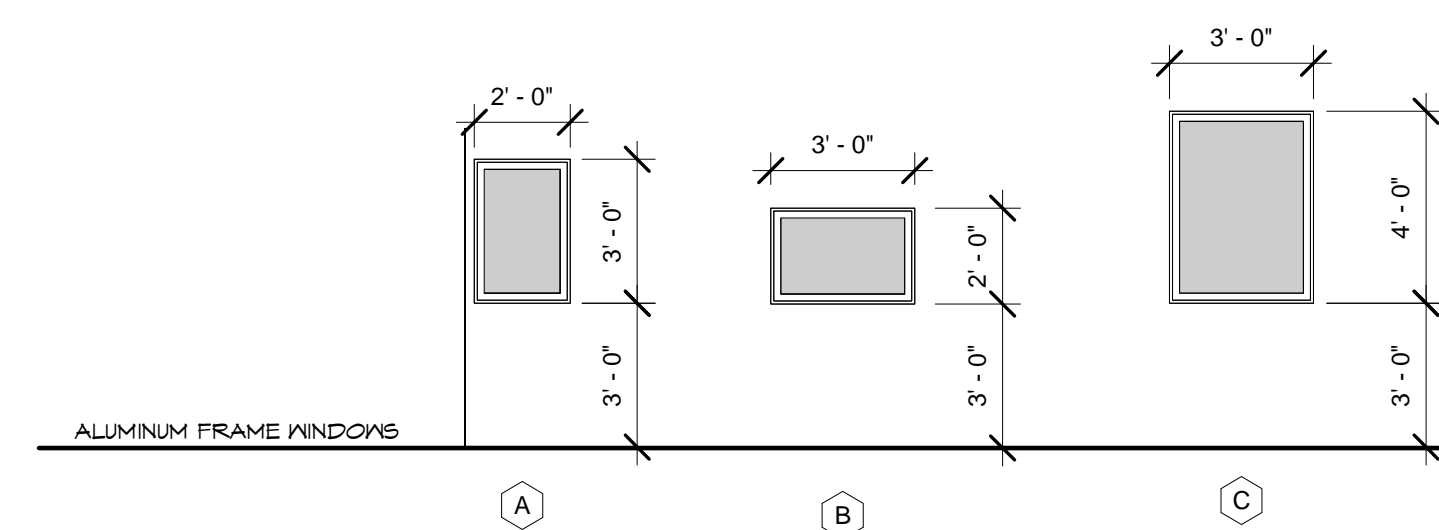
6 DOOR DETAILS
1 1/2" = 1'-0"



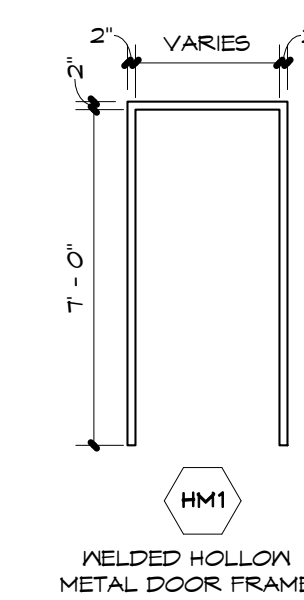
5 EXTERIOR DOOR TRESHOLD
1 1/2" = 1'-0"



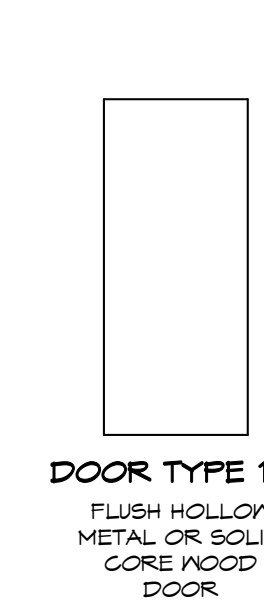
4 WINDOW HEAD AND SILL DETAIL
1 1/2" = 1'-0"



2 DOOR FRAMES
1/4" = 1'-0"

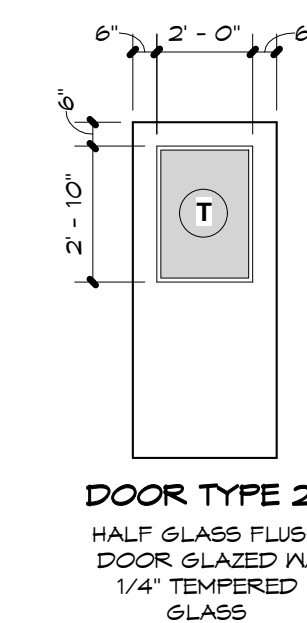


HM1
WELDED HOLLOW METAL DOOR FRAME



DOOR TYPE 1
FLUSH HOLLOW METAL OR SOLID CORE HOOD DOOR

1 DOOR TYPES
1/4" = 1'-0"



DOOR TYPE 2
HALF GLASS FLUSH DOOR GLAZED W/ 1/4" TEMPERED GLASS

T DENOTES TEMPERED GLASS

COPYRIGHT: VAUGHT FRYE LARSON ARCHITECTS, INC. 2011.
THIS DRAWING MAY NOT BE PHOTOGRAPHED, SCANNED, TRACED OR COPIED IN ANY MANNER WITHOUT THE WRITTEN PERMISSION OF VFLA.

DOOR & WINDOW SCHEDULE

DRAWING NUMBER:

A7.1